

WEATHER		
	Min.	Max. Precip.
Wednesday, Nov. 10	33	49 0.00
Thursday, Nov. 11	32	46 0.00
Friday, Nov. 12	33	50 0.00
Saturday, Nov. 13	35	57 0.00
Sunday, Nov. 14	34	67 0.00
Monday, Nov. 15	43	67 0.00
Tuesday, Nov. 16	30	56 0.00

The Chelsea Standard

QUOTE

"All that is necessary for the forces of evil to win in the world is for good men to do nothing."
—Edmund Burke.

ONE HUNDRED-SECOND YEAR—No. 22

14 Pages This Week

CHELSEA, MICHIGAN, THURSDAY, NOVEMBER 18, 1971

15c per copy

SUBSCRIPTION: \$4.00 PER YEAR

WE'RE NO. 1 IN STATE

Damage Total Is \$10,384 from Boiler Blast

Repairs necessitated by last Monday's furnace explosion at Chelsea high school will "hopefully" be completed by the first of next week, Business Manager Fred Mills said Tuesday.

To repair the damaged boiler and completely replace its control system will cost approximately \$6,200. Another \$3,300 will be expended to buy new controls for the other 600,000 BTU boiler, and \$884 will be spent to replace the shattered windows in the small boiler building. The damage is fully covered by insurance, Mills said.

The explosion was apparently caused by a faulty shut-off valve which allowed gas to flow into the furnace during an "off" cycle. One member of the high school's custodial staff, Steve Dorr, was in the building at the time of the explosion, but was not injured.

The portion of the high school complex heated by the two boilers has been adequately served by the remaining boiler. No classes or activities were cancelled as a result of the blast.

Pig Bowl Funds To Help Local Children

The annual distribution of gifts to needy children of the Chelsea area and their families will proceed as usual this Christmas but with a difference.

This year the toys will be provided by the Washtenaw County Sheriff's Department from proceeds of the Pig Bowl game which has now become an annual fall event.

In addition to toys, each family on the list will receive a box of groceries designed for the holiday table, as well as a purchase order for perishable items or any wanted articles not contained in the box.

As in former years, the distribution will be under the direction of the Chelsea Social Service and (Continued on page two)

Robert Eder Kills Family Then Himself

A former Chelsea man killed his wife and two children and then took his own life Tuesday, Nov. 16, in Charleston, W. Va.

Robert Eder, a statistician for the U. S. Agriculture Department, apparently struck his wife, Pat, 29, on the head with a hammer, and then shot his two sons, 4 and 7, in the head with a shotgun, according to Charleston Police Chief Lawrence Morris. Eder then turned the shotgun on himself, the police chief said.

According to sources close to the family, Eder had apparently had some job difficulties recently and had planned to see a psychiatrist.

The bodies have been returned to Chelsea for burial.

Fun Night Set Tonight at CHS

Fun Night at Chelsea High school, sponsored by the Chelsea Scholarship committee and the National Honor Society, is going to be FUN.

It's happening this Friday night, 7 to 10 p.m. in the high school gym, and with dozens of activities to choose from—trampoline, games, movies and lots more—you can't miss.

Proceeds from Fun Night, good for all kids from upper elementary age on up, are added to the Chelsea Scholarship Fund.

Faculty Team Wants To Grab No. 1 Ranking

Finally, the Chelsea Bulldogs varsity football team is meeting the supreme test. For the past three to four weeks they have been claiming the No. 1 rating in the State of Michigan.

Tonight at 7:30 the Chelsea faculty, just packed with "talent" will challenge them on the field of battle, Niehaus Memorial Field. The faculty is bringing along 10 shapely and enthusiastic cheerleaders to urge on the large crowd expected to attend. (No doubt to sway the feelings and cheers of the fans to the side of the faculty.)

A half-time "super spectacular" performance will be presented by the Chelsea High School Marching Band (the last marching performance of the season).

Rumor also has it that the officials for the game have been hand-picked by the faculty to insure a victory and thereby give them the No. 1 rating, which according to a spokesman for the teachers, "we really deserve due to our depth, unusual talent, experience, and undefeated status."

It will be a real fun night with proceeds going to the Chelsea High Baseball Clinic Fund.

Remember kick-off is tonight at 7:30 p.m., Thursday, Nov. 18.

JC's, Auxiliary Attend State Board Meet

Several members of the Chelsea Jaycees and the Jaycee Auxiliary attended the Michigan Jaycees fall board meeting held in Cadillac, Nov. 12 and 13.

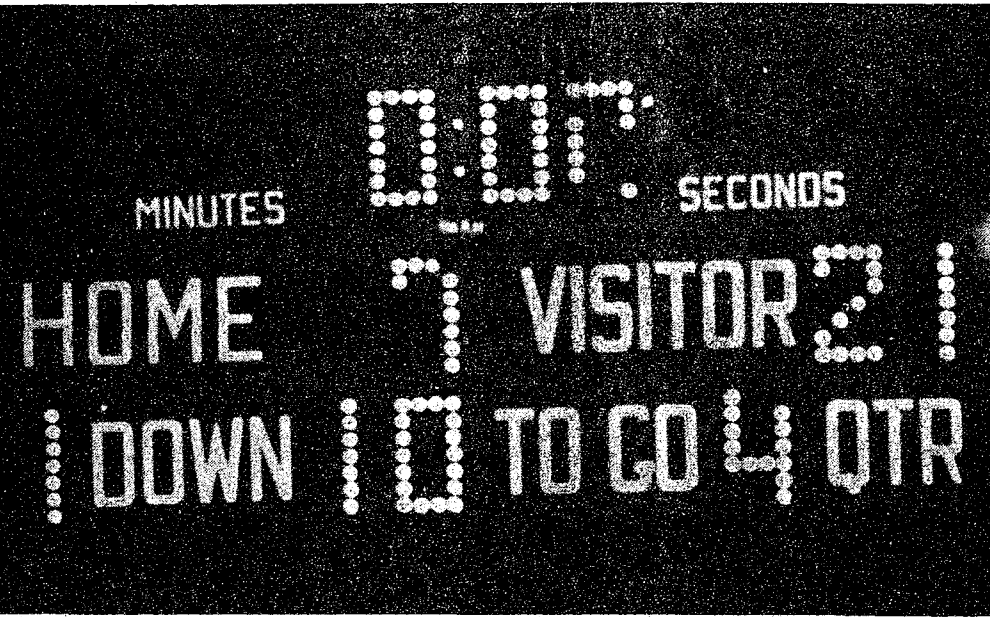
Mr. and Mrs. Walt Brown, Mr. and Mrs. Dick Cail, Mike Eubanks, Mr. and Mrs. Doug Robeson, Mr. and Mrs. Dave Rowe, Mr. and Mrs. Art Steinaway, and Mr. and Mrs. Bob Updegraff attended the meeting.

Michigan Jaycees amended their by-laws to lower membership age to 18 during the two-day conference, becoming the first state Jaycee organization to officially accept 18-year-olds.

Chelsea anticipated the state's action and voted at their September board meeting to accept 18-year-olds effective Jan. 1, the date the new age of majority law takes effect.

During the meeting, several workshops, both for Jaycees and Auxiliary members, were held.

(Continued on page five)



FINAL SCORE: The clock ran out on the 1971 football season, as Chelsea defeated Jackson Northwest, 21 to 7, last Friday night in Jackson. The game climaxed an exciting season for the Chelsea gridders who not only won their fourth consecutive Southeastern Conference title, but also tied with Kalamazoo Hackett for Class B top honors in the AP sportswriters poll. Chelsea and Hackett were both 9-0 for the season.



INTERCEPTION: Mark Collins (24) cuts back inside after intercepting a fourth quarter Northwest pass. Collins returned the ball 20 yards to the west pass. Collins returned the ball 20 yards to the west pass.

Northwest 35. Later in the fourth period Collins frosted the cake by running 96 yards for the final touchdown of the game.



HOW CLOSE? The Mounties were in possession. It was third and three on the Chelsea seven-yard line, less than two minutes left in the game. The Mounties ran an outside play (shown here) for a two yard gain. Chelsea held on the fourth and one play, and then Mark Collins ran 96 yards for the last touchdown of the game. Chelsea 21, Northwest 7.

Chelsea held on the fourth and one play, and then Mark Collins ran 96 yards for the last touchdown of the game. Chelsea 21, Northwest 7.

State Class C Championship Claimed By Chelsea in 1928

They weren't known as the Chelsea Bulldogs then. They were called "the Purple and Gold boys," and they were, perhaps the Class C State Champions of 1928.

There were no AP sportswriters' polls in 1928. Chelsea had an unpaid, part-time coach, uniforms for 13 players, and a football field which was, in fact, a field "composed of gentle rolling land very suitable for such an occasion as football."

The players had to clean it off and time yard line markings in before each game, but as Lawton Stoger, star halfback of the 1928 team said, "We were real proud of our football."

Chelsea lost only one game in 1928, and that one under somewhat dubious circumstances. After winning all their games in regular season play, Chelsea was challenged by Vicksburg to the Class C state championship match of the year.

The game was played in Vicksburg, in the rain, and, as Lawton Stoger remembered "there was about half a foot of water in the middle of the field."

Vicksburg scored early in the game. Chelsea moved the ball to the Vicksburg 40-yard line with less than one minute to play in the fourth period, but the final whistle blew before the

Purple and Gold could score. Chelsea lost the game. The Chelsea Standard of Nov. 15, 1928 proclaimed, "due to a wet, muddy field and some unfair decisions."

Chelsea protested the game on grounds of faulty officials, five downs given Vicksburg, incorrect timing, and interference with men receiving passes. The protest was, apparently, to no avail.

Following the Vicksburg game, Chelsea challenged any teams willing to the "Class C Championship Match," to be played on a neutral field. Two teams accepted the challenge, (Continued on page three)

Bulldogs Preserve Perfect Season with 21-7 Win at Northwest

Bulldogs Tie For No. 1 Spot In Final Poll

The final AP sportswriters' poll has been taken, the results are in, and according to writers across the state, Chelsea has tied for top honors in the Class B rating with Kalamazoo Hackett. Both Chelsea and Hackett had 9-0 season records.

Class B voting was so tight that Chelsea and Hackett each finished with 69 points, 12 more than Dearborn Divine Child (8-1). At one point in the season, four teams were tied for the top Class B slot.

Muskegon and North Muskegon finished number one in the Class A and Class C polls, respectively. Mt. Pleasant Sacred Heart captured the number one spot in Class D.

Fall Sports Banquet Set For Monday

The annual fall sports awards banquet will be held Monday, Nov. 22 at 6:30 p.m. in the high school cafeteria.

The event recognizes all those who have participated in fall sports—freshmen, junior varsity or varsity football, cross country, and junior and senior varsity cheerleading—and they, their parents, board of education members, and others intimately connected with the high school athletic program have been invited to attend.

More than 350 people are expected to participate in this year's event which will begin with a potluck supper, and end with an awards presentation in the high school auditorium.

Basketball Team Plans Scrimmage Saturday for Public

Chelsea High school's basketball team, which held its first practice will all players present Wednesday, Nov. 17, will hold an intersquad scrimmage Saturday, Nov. 20 at 7:30 p.m.

The scrimmage is open to the public without charge.

Basketball Coach Chuck Kelly will explain two new rule changes to fans prior to the scrimmage.

Defeat Fine Team To Remain No. 1 Class B Team in State

It was undoubtedly the game of the year for Chelsea. The undefeated Bulldogs (8-0) were pitted against the undefeated Jackson Northwest Mounties (8-0) last Friday. Everyone in Chelsea knows the score by now... Chelsea 21, Jackson Northwest 7.

The game, played in perfect weather before a crowd containing almost as many Chelsea fans as Jackson partisans, capped a perfect season for the Southeastern Conference champs.

Chelsea, first ranked Class B team in the AP sportswriters' poll, finished the year with their fourth straight Southeastern Conference title and a 9-0 record.

Final AP poll this week lists Chelsea and Kalamazoo Hackett in a tie for first place.

Chelsea scored first in the first period as Wayne Welton, behind fine blocking by Keith Pfeifle, Randy Seitz, Tom McKernan, Dave Tucker, and Bob Wojcicki, threw a perfect 82-yard pass over the middle to slotback Jeff Hughes for a touchdown.

The extra point pass from Welton to Collins made the score Chelsea 8, Northwest 0.

Chelsea's defense was spectacular once again as they contained the Mounties' offense, and forced mistakes that, at least once, cost the Northwest 11 points.

Prior to Northwest's second quarter touchdown, the defense

stopped the Mounties when they were poised on Chelsea's two-yard line. Bob Wojcicki and Tom McKernan forced a fumble by the Northwest ball carrier which was picked up by Dave Lukasiak.

A punt by Jeff Hughes, downed by Marty Cashdollar on the Mounties' two-yard line made Chelsea's position look fairly secure for a while, but Northwest sprung Andy Onda open on a trap play, and Onda sprinted 69 yards before being caught from behind by a fine, diving tackle made by end Dave Lukasiak.

Northwest scored in the second quarter after driving 72 yards in 12 plays. Doug Rogers went the last 13 yards up the middle on a trap play for the score, but Jackson kicked the extra point and Chelsea retained a one-point lead, with the half-time score Chelsea 8, Northwest 7.

Two vital pass interceptions in the third quarter by Dave Lukasiak and Mark Collins stopped Northwest drives and put Chelsea on the move again.

Chelsea scored once in the third period as Welton hit Collins in the end-zone from the 33-yard line. The extra point kick was not good, and Chelsea led, 14 to 7.

Chelsea's fourth quarter kickoff to Northwest was returned to the Mounties' 40-yard line. With first and 10 on Chelsea's 14, Northwest ran three plays for 9 yards. Then it was fourth and one on the five.

Andy Onda tried a slant right. Koenigster shot the gap wide, Lixey drove Onda sideways, and Seitz, Brier and Lukasiak brought him down on the line of scrimmage.

It was the Bulldogs' ball with 1:39 remaining in the game.

With third down on Chelsea's own four-yard line, Mark Collins slanted off right end behind Wojcicki and Seitz, and with lead blocks by Hughes and Lixey, Collins ran 96 yards for the last touchdown of the game. Steve Knickerbocker kicked the extra point, and it was all over but the shouting... Chelsea 21, Northwest 7.

The game closed out the football careers of some fine Chelsea high school senior athletes. Seeing their last high school grid action were: co-captains Wayne Welton and Tom McKernan, Ralph Stewart, Randy Brier, Mark Collins, Joe Aspiranti, Marty Cashdollar, Tom Lixey, Jeff Hughes, Keith Pfeifle, Bob Wojcicki, Larry Hopkins, John Porter, Randy Seitz, Ed Koenigster, Dennis Landwehr, Steve Knickerbocker, Dave Lukasiak and Larry Jones.

'Adventures in Switzerland' Shown in Kiwanis Travel Film

Mark Twain's journey to Switzerland in 1878 provides the frame work for Dick Reddy's "Adventures in Switzerland," the second program in the 11th annual Kiwanis sponsored Travel and Adventure series.

"Adventures in Switzerland" will be shown Nov. 20 at 8 p.m. in the Chelsea High school auditorium.

Reddy's film traces the route the incomparable American humorist followed as he traversed The magnificent country side of Switzerland—from the towering peaks of the Jungfrau to the cold dark dungeons of the Castle of Chillon.

Sleigh rides, balloon flights, plane flights over the Alps, sunrise on Mt. Rigi, and a Swedish Christmas are all part of the fare.

Reddy, a native of Texas, received his first taste of adventure while listening to his grandfather, one of the last Indian fighters of north-central Texas, recount



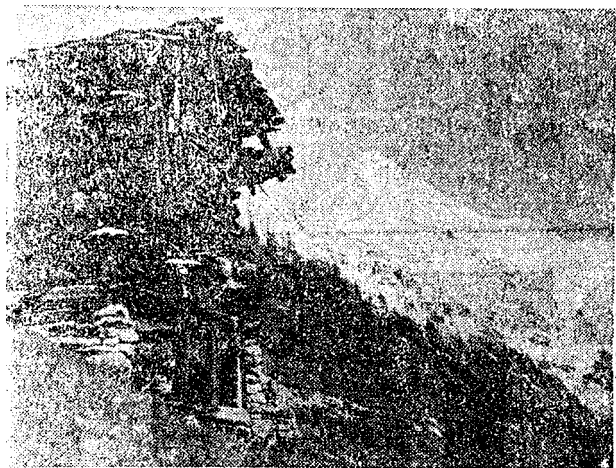
DICK REDDY

tales of his skirmishes with the Indians. In World War II, Reddy experienced (Continued on page two)



GOOD SHOW: Members of the Chelsea Kiwanis Club were treated to films of the Jackson Northwest game at their Monday night dinner meeting this week. Experts on hand to explain the

plays were (left to right) Richard Bareis, Sam Vogel, Jeff Hughes, Tom McKernan, Jim Tallman and head coach Phil Bareis.



"ADVENTURES IN SWITZERLAND," the second program in the 11th annual Kiwanis sponsored Adventure and Travel series, will be presented Saturday, Nov. 20 at 8 p.m. in the Chelsea High school auditorium. Dick Reddy follows the route that Mark Twain took through Switzerland in the late 1800's. The film features a balloon flight over a portion of the Alps, sunrise on Mt. Rigi, and Swedish Christmas.

Travel Film Visits Switzerland

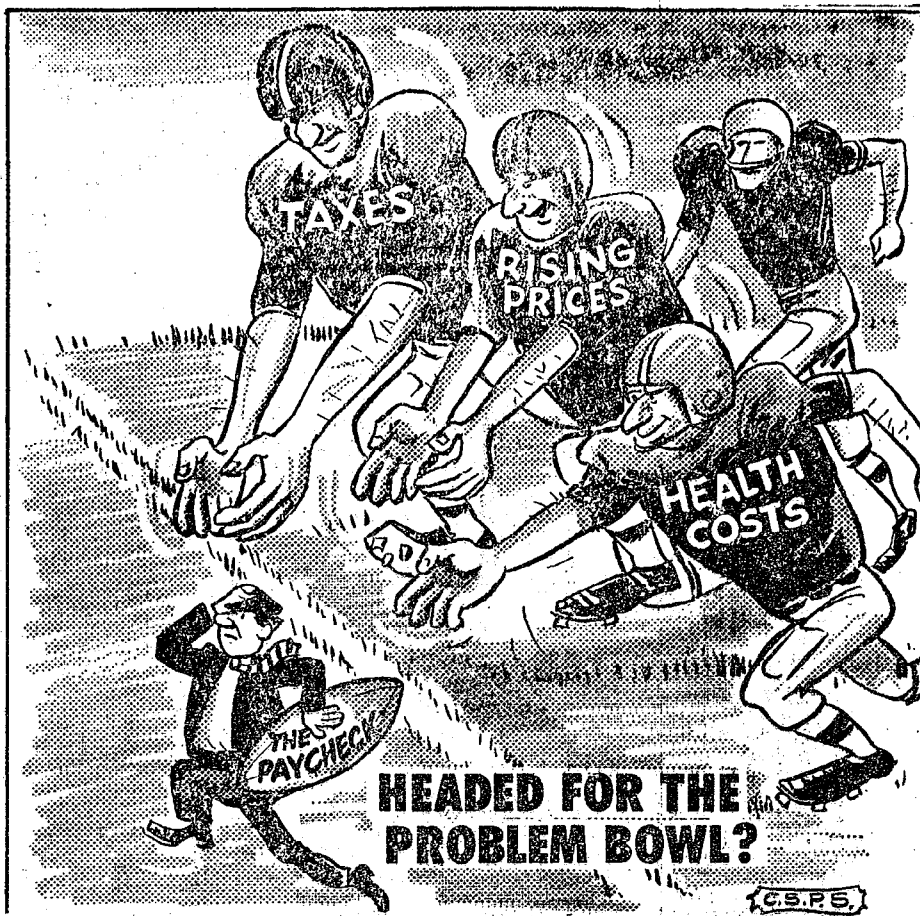
(Continued from page one)

experienced excitement and adventure of his own when his unit of 65 men was given the assignment to pass 60 miles through German 12th Army and, on the Russian forces east of Elbe River.

It was only natural after subsequent trips to Russia, including one which took him across the vast Ukraine and from Black Sea to the Finnish border, and many excursions across

Europe under more favorable circumstances, that Reddy should enter the film-lecture field. Reddy graduated from the School of Journalism of North Texas University, studied English at UCLA and returned to North Texas University to receive a Master of Arts degree. It was his study of cinematography at the University of Southern California that whetted his appetite for photography and travel.

Subscribe today to 'The Standard'!



★ MICHIGAN MIRROR ★

By Elmer E. White, Secretary, Michigan Press Association

Indians Fight Back

The American frontier was "conquered" according to the U.S. Census of 1890.

The declaration signaled a final victory for the "foreigners" who had been streaming to America for nearly 400 years. But for the original inhabitant—the only "true American"—it marked a final defeat and continuation of his status as a second-class citizen in his own land.

That second-class status has, unfortunately, continued almost unabated since then.

A national survey recently found that Indians:

- have an average income of \$1,500 a year, or 75 percent below the national average.
- have an unemployment rate of 40 percent, almost 10 times the national average.
- have a life expectancy of 44 years, compared with 65 years for the white population.
- have a school dropout rate twice the national average and approaching 100 percent in some school districts.

In recent years, however, the American public has experienced an increasing awareness of the inequitable treatment Indians have received and things are

changing, even if the changes are slow.

By far the most publicized change in Michigan this year involved Indian fishing rights. It started April 5 when the state Supreme Court overturned the 1965 arrest of William Jondreau, a L'Anse Chippewa, caught with four lake trout from the Keweenaw Bay on Lake Superior in violation of state game laws.

The ruling said Indians, by virtue of treaties they signed with the United States government in the 1800's, had the right to hunt and fish without restriction anywhere in the state.

"The way I look at this opinion, they can fish and hunt on all land ceded to the United States," George M. Dahl, chief of the law enforcement division of the Department of Natural Resources said the following day.

But a storm of protest started rising from the sportsmen lobby and the DNR itself. Complaints were lodged that Indians were "trapping" the Great Lakes with unlimited fishing, especially commercial fishing.

The Indians denied the charges, saying they weren't fishing enough to affect the levels of fish in the lakes.

Finally, in August, the Supreme Court issued a second ruling that the unlimited fishing rights belonged only to the L'Anse band of the Chippewa tribe. Members of other bands of Chippewa complained the court was "honoring one treaty and not others."

The Bay Mills band of the Chippewa tribe decided to fight the ruling. One of its members, A. B. LeBlanc, went fishing on Lake Superior and was arrested so a test case could be started.

LeBlanc was convicted Oct. 5 of illegal fishing and is now in the process of appealing the ruling.

The case is far from over, and even if Indians are granted unlimited fishing rights it is only a small start in repaying them for the conditions to which they have been subjected in what originally was their land.

Headaches Caused

Birth-like pains are resulting from the new program under

MONEY TROUBLE?
ONE PLACE TO PAY!
Credit Management Service
662-2565
215 South Fifth Ave.
Ann Arbor
State Licensed and Bonded

Gifts for Needy

(Continued from page one)

will take place in the Sylvan Town Hall on the afternoon of the Saturday preceding Christmas, Dec. 18.

Because of the substantial toys provided by the Sheriff's Department, it is suggested that groups and individuals wishing to make contributions to the program give canned goods or other edible or decorative items for the food boxes. Money gifts are suitable as they may be used for purchase of food. New clothing, particularly boys' underwear, is welcome.

Mrs. Ramp has requested that anyone knowing of needy families who may not be provided for otherwise should be referred to the Chelsea Social Service at 475-4881 any Tuesday or Thursday afternoon until Dec. 16.

IF YOUR ROOF IS HURTIN' Call Burton!

- ★ Old and New Roofs
- ★ Hot Tar and Metal Roofs
- ★ Aluminum Siding
- ★ Aluminum Awning and Storm Doors and Windows
- ★ Seamless Aluminum Eaves Troughs and Down Spouts
- ★ Mobile Home or Trailer Skirting

COOPERATIVE ROOFING & SIDING CO.
Call 662-5900 or 662-3288
Evenings Call Burton Rathbun, 663-0754

JUST REMINISCING

Items Taken from the Files of The Chelsea Standard

1 Years Ago . . .

Thursday, Nov. 23, 1967—

Chelsea Medical Center's building site, which 15 months ago was little more than a wooded peat marsh, is now a beehive of activity and the medical center itself is now in its first week of operation.

The medical center currently has a staff of four full-time doctors, Dr. Michael Papo, Dr. James Rotsford, Dr. Bruce Stubbs, and Dr. Jerry Waldyke. Four other doctors work at the center on a part-time basis, and a fifth full-time physician, Dr. Eugene Claeys, will join the center in July.

Basketball season opens officially for the Chelsea Bulldogs Friday, Dec. 1, when the Chelsea team meets the Dundee Vikings in Dundee. Varsity coach this year is Terry Pokela. Six of the 15 players on the varsity team are returning lettermen; John Lixey, Jack Riser, Craig Houle, Larry Gaken, John Freeman and Jim Lyons.

The Rev. Daniel Kelin began his ministry at the Congregational United Church of Christ Sunday, Nov. 19.

Fr. Louis Allippi, founder of the St. Louis school, arrived for his second visit to the United States this past week. The Italian priest, Superior General of the Servants of Charity, was first called to the United States in 1959 to select sites for the two schools his order planned to build in the United States.

14 Years Ago . . .

Thursday, Nov. 21, 1957—

J.V. Burg, II, brought home a 140-pound black bear from a three-day hunting expedition to the northern part of the state. The bear, shot in Alcona county, was an added bonus for Burg, who also shot a spikehorn deer. Three other hunters in Burg's hunting party of five also got deer. Local hunters are reporting little success, however.

Also, he says, some people separate the prepared application into two parts and return only one part.

"Maybe they want to save us a little time or work," Austin says. "Unfortunately, we need both halves. Both have to be stamped and recorded, and, quite frequently, the owner has sent in the wrong half."

George E. Barth, a life-long

Chelsea area resident, was killed Friday when struck by a car on US-12, east of M-92, at approximately 7 p.m. Barth had been hunting before the fatal accident.

Plans for the Band Folies to be held Dec. 4 are progressing. Both student and adult talent are being booked for the variety type show. The latest act added is an all-girl dance team to be selected from the high school girls' physical education classes under the direction of Mrs. Betty Thurston.

Protestant churches of Chelsea will hold a united Thanksgiving service at the Methodist Home chapel Wednesday, Nov. 27 at 7:30 p.m. The Rev. P.H. Grabowski of St. Paul's Evangelical and Reformed church will deliver the sermon, and other Chelsea pastors will also participate in the service.

24 Years Ago . . .

Thursday, Nov. 20, 1947—

Chelsea's Bulldogs ended the 1947 grid season last Friday with a decisive 26-0, victory over a weak Manchester team. It was a fine season for the Bulldog 11 who closed the year with a seven win, one loss and one tie record. The first two games of the season accounted for the tie and the loss, as Chelsea and Dexter struggled to a 0-0 finish in the opening game, and Chelsea was defeated, 26 to 12, in the second game against South Lyon.

The mystery of the purchase of four sections of land in Sylvan township deepened this week as it was discovered that all the contracts of sale are not the same. Ray E. Pfeiffer, Farm Forester for Washtenaw county, when asked to estimate the volume of timber that could be marketed on the farms, discovered that some farmers may sell none of the timber on their land under the terms of the contract, and others have the right to cut only definitely limited quantities.

Two Chelsea men narrowly escaped death Friday night after their car stalled on the Hayes St.

railroad crossing. Moments after the men deserted the stalled car, it was struck by the fast freight due in Chelsea at 12:20 a.m. The car, which was wedged on the front of the engine by the impact, was totally demolished. Driver of the car was Roy Carpenter, and his passenger was Jim McManahan.

The South End Harmonettes, Phyllis, Maurine, Rose Ann, Joanne and Yvonne Hoffman, winners of the Kiwanis sponsored amateur contest held Nov. 8, have been invited to appear over station WPAG in Ann Arbor.

Leland J. Kalmbach, son of Mrs. John Kalmbach of Chelsea, has been elected vice-president of the Massachusetts Mutual Insurance Co. Kalmbach, who is currently first vice-president of Lincoln National Life Insurance, will take up his new duties Dec. 1.

34 Years Ago . . .

Thursday, Nov. 1, 1937—

Chelsea's first Community Fair, held last Saturday at the high school, was a great success. Sponsored by the Kiwanis club and the FFA, the fair featured a fine exhibit of livestock, grain, apples, handicrafts, nuts, eggs, canning, potatoes, food preparation, wool, clothing and other items. Ribbons were awarded to the outstanding exhibits and cash amounting to about \$100 will be mailed to the winners.

The Armistice Celebration dinner and dance given by Herbert J. McKune Post No. 31 and its auxiliary proved very successful. More than 300 dinners were served in the school auditorium, and later in the evening 200 persons danced to the tunes of Jerry Beissel and his orchestra.

While the afternoon parade was not entered into with the spirit which the Legion had anticipated, several fine floats were seen, and the high school band added a touch that made it a very fitting celebration.

Dr. Harvey C. Pearce, who was in Palestine this past summer, will show pictures he took on his trip tonight at the North Lake church. Dr. and Mrs. Pearce appear in Arabic costume and have worked out a very instructive and entertaining program.

The Union Thanksgiving service will be held in the Methodist Episcopal church Wednesday.

Thanksgiving Special

CENTERPIECES

Fall Shades \$4.00 and up
(Free Delivery in the Chelsea and Dexter areas.)

CHOICE SELECTION OF CUT FLOWERS & PLANTS Grown in Our Greenhouse.

6-ft. GRAVE BLANKETS\$8.00 and up
18-in. EVERGREEN WREATHS
Trimmed\$3.00 and up
Untrimmed\$2.00
24-in. WREATHS, trimmed\$4.00 and up

CHELSEA GREENHOUSE

Member FTD Wire Service
7010 Lingane Rd., Chelsea Phone 475-1157

Let your furnace breathe again.

Replace the filter at least once each heating season and clean it once each month if needed. You'll save Gas and money.

Replacing or cleaning the filter in your Gas warm air furnace is just a small job. But it can make a big difference. Because a clogged filter makes your furnace work harder and use more Gas. And that costs you more money.

This is just one of many Gas and money-saving ideas you'll find in Michigan Consolidated Gas Company's free booklet, "The Great Escape." By checking and correcting the ways heat escapes from your home, you can make Gas (already one of today's big bargains) an even bigger bargain. Fill out the coupon, and learn more ways to foil the great escape—and save Gas and money, too. Or pick up a copy of "The Great Escape" at any of our offices. It's free.

MICHIGAN CONSOLIDATED GAS COMPANY
211 E. Huron Street, Dept. GS
Ann Arbor, Michigan 48107

As a customer of Michigan Consolidated Gas Company, I would like to receive a free copy of "The Great Escape."

Name _____
Address _____
City _____
State _____

MICHIGAN CONSOLIDATED GAS COMPANY

The future is great with Gas!

Established 1871 The Chelsea Standard Telephone GR 5-8681

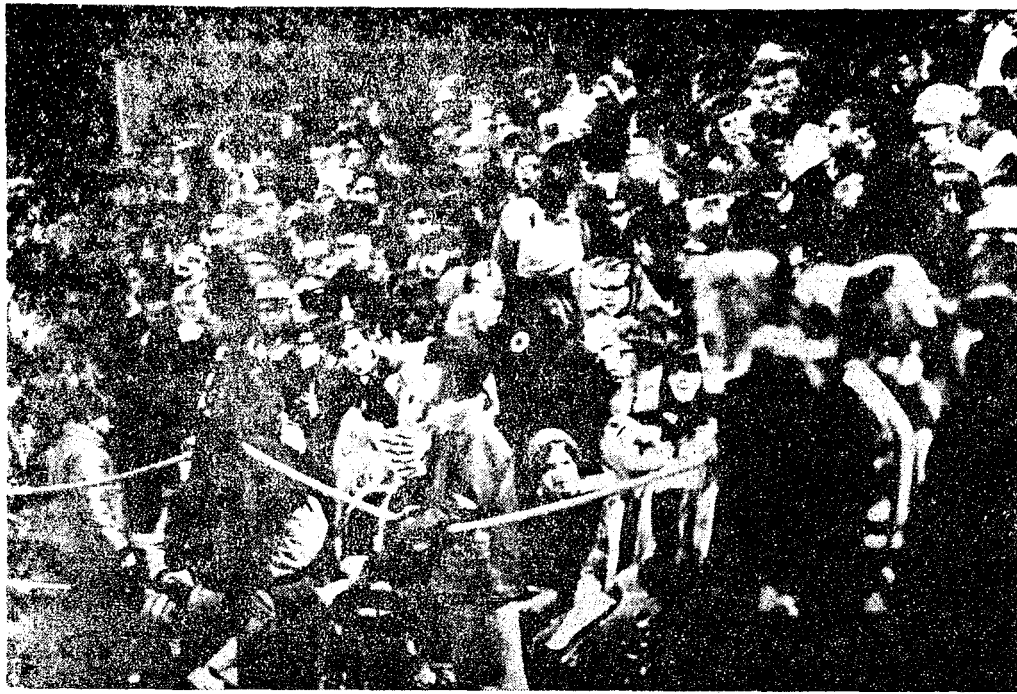
Excellence Award By Michigan Press Association
1961-1962-1963-1964-1965-1966

Writer P. Leonard, Editor and Publisher

Published every Thursday morning at 800 North Main Street, Chelsea, Mich. 48118, and second class postage paid at Chelsea, Mich., under the Act of March 3, 1879.

Subscription Rates (Payable in Advance)
In Michigan: One Year \$4.00, Six Months \$2.25, Single Copies \$0.15
Outside Michigan: One Year \$6.00, Six Months \$3.50, Single Copies \$0.20
Service men or women, anywhere, 1 year \$4.00

MEMBER NATIONAL NEWSPAPER Association - Founded 1888
National Advertising Representative: MICHIGAN NEWSPAPERS, INC.
267 Michigan Ave.
Ann Arbor, Mich. 48106



WE'RE NUMBER ONE: Shown here, a small portion of the Chelsea crowd attending the Bulldogs' final game against Jackson Northwest which was played in Jackson last Friday night. The undefeated Bulldogs downed the previously undefeated Mounties as Chelsea fans shouted "We're Number One! We're Number One!" Final score: Chelsea 21, Northwest, 7.

Chelsea Gridders of 1928 Claimed State Class C Title

(Continued from page one)
and Chelsea defeated them both. Perhaps one measure of the strength of Chelsea's Purple and Gold Boys was the fact that they defeated Class A Wyandotte, 13 to 0, on Nov. 8, 1928. "The game was in Chelsea's favor at all times," Wyandotte

making only two first downs during the game," The Standard said. The first two touchdowns came as "the result of two superb 20-yard broken-field runs by Steger." Following the second run, Weber plunged through the center for the touchdown. After Chelsea's second TD,

Wyandotte elected to receive, and then started a passing attack. "A pass was intercepted by 'Howdy' Holmes who carried the ball to the 25-yard line. On the next play, Staffan, running with perfect interference, carried the ball diagonally for the last touchdown."

Other key players in 1928 were Arnold "Flash" Fahrner, the Irwin brothers, John Adriani Paul Barbour and end Frederick Steiner. Coach was Harold Spaulding.

The season closed with a football banquet served by the Methodist church women. "The success of the affair is assured," The Chelsea Standard for Thursday, Dec. 18, said, "because the Methodist ladies never fail to do things in a very creditable manner."

It was, apparently a very creditable banquet, complete with "splendid repast." Lawton Steger was the toastmaster, and the first item on the program was a musical selection by the orchestra. "Next was a short talk on 'Our Football of 1928' given by Capt. Fahrner. Then Albert Potts gave a brief speech on 'Our Football Team as Seen by a Spectator.' Following this, the Uke club played and sang a few popular numbers. Howard Holmes, Jr., and Paul Barbour talked on 'Our Backfield,' and 'Our Line.'"

A uke club will not perform at next Monday's fall sports banquet.

District Court Proceedings

In 14th District Court during the week of Nov. 9 through 15, Orrin Randall, Chelsea, was sentenced to one year probation, the antabuse program for one year, referred to the alcohol safety program and ordered to pay \$150 fine and costs on a charge of impaired driving.

Thomas Hollister, Saline, pled guilty to impaired driving and will be sentenced Dec. 12.

Dale Schultz, Saline, pled guilty to impaired driving. He was referred to the probation department, and will be sentenced Dec. 21.

Raymond Roberts, Ann Arbor, pled guilty to reckless driving, and was ordered to pay \$75 fine and costs or spend 10 days in jail.

James Russell of Manistee, pled guilty to improper lane usage and was ordered to pay \$16 fine and costs.

Harold D. Heim was found guilty of speeding 50 mph in a 25 mph zone and was ordered to pay \$41 fine and costs.

Dan B. Zanotti, Ann Arbor, pled guilty to speeding 60 mph in a 35 mph zone and was ordered to pay \$41 fine and costs.

Harold Denney, Jackson, pled guilty to speeding 50 mph in a 25 mph speed zone and was ordered to pay \$21 fine and costs.

Glenn Buckmaster, Clinton, pled guilty to speeding 50 mph in a 35 mph zone and was ordered to pay \$21 fine and costs.

Harry Lime, Manchester, pled guilty to having no operator's license on his person and was ordered to pay \$10 fine and costs.

John Culp pled guilty to driving 45 mph in a 30 mph zone and was ordered to pay \$21 fine and costs.

Larry Gray, was found guilty of speeding 47 mph in a 30 mph zone and was ordered to pay \$23 fine and costs.

Ronald Desbrough, Saline, pled guilty to speeding 50 mph in a 25 mph zone and was ordered to pay \$41 fine and costs.

Geneve A. Lee, Tipton, pled guilty to speeding 44 mph in a 25 mph speed zone and was ordered to pay \$29 fine and costs.

Gerald Thompson, Ann Arbor, pled guilty to speeding 45 mph in a 25 mph speed zone and was ordered to pay \$31 fine and costs.

Gary Knowlton, Wayne, pled guilty to speeding 42 mph in a 25 mph zone and was ordered to pay \$25 fine and costs.

Michael Sheets, Milan, pled guilty to speeding 60 mph in a 45 mph zone and was ordered to pay \$21 fine and costs.

Gary Goodette, Ann Arbor, pled guilty to running a stop sign and was ordered to pay \$16 fine and costs.

Michael Whelan, Tecumseh, pled guilty to speeding 40 mph in a 25 mph zone and was ordered to pay \$21 fine and costs.

Roger Dirkse, Ann Arbor, pled guilty to speeding 40 mph in a 40 mph zone and was ordered to pay \$21 fine and costs.

Gregory Jablonski, pled guilty to speeding 40 mph in a 25 mph zone and was ordered to pay \$21 fine and costs.

James Ward pled guilty to assault and battery and will be sentenced Dec. 3, 1971.

Carl Sandall was ordered to pay \$150 fine and costs or spend 30 days in jail when sentenced for driving under the influence of liquor.

Jerry Lavan and Craig Fritz pled guilty to unlawful entry, and will be sentenced Dec. 20.

James M. Galuszka, Ann Arbor, pled guilty to a charge of being drunk and disorderly and will be sentenced Dec. 20.

Albert H. Hafley was found guilty of careless driving and was ordered to pay \$35 fine and costs or spend three days in jail.

William Michael Kane pled guilty to speeding 50 mph in a 30 mph speed zone and was ordered to pay \$31 fine and costs.

Fred D. Burch pled guilty to speeding 90 mph in a 70 mph speed zone and was ordered to pay \$31 fine and costs. Burch also pled guilty to driving on a suspended license and was ordered to pay \$75 fine and costs and spend three days in jail.

Personal Notes

Mrs. Cora Lee Miller returned home Friday, Nov. 12, after a five-week stay at U. of M. Hospital where she underwent major surgery.

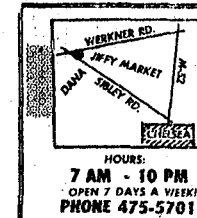
YES

WE ARE MAKING LONG-TERM FARM REAL ESTATE LOANS

SEE US



P. O. Box 1006
Ph. 769-2411 3645 Jackson Rd.
Ann Arbor, Mich. 48103



Jiffy market

BIG ENOUGH TO SERVE YOU.....SMALL ENOUGH TO KNOW YOU!



Corner of SIBLEY & WERNER RDS.....CHELSEA, MICHIGAN

SALE PRICES EFFECTIVE THURSDAY, NOV. 18, THRU SUNDAY, NOV. 28, 1971.

Store Hours Are 7 a.m. to 10 p.m. 7 Days A Week



U.S.D.A. CHOICE

ROUND STEAK

Full Cut Round **99¢ lb.**
Top Cut Round **\$1.09 lb.**

THANKSGIVING DINNER TURKEYS DUCKS - GEESE Fresh OYSTERS

Available Here!

ECKRICH
Slender Sliced MEATS
3 pkgs. **\$1.00**

HICKORY HOST
RING BOLOGNA
Plain or Garlic **69¢ lb.**

CAMELOT
ALL-MEAT FRANKS
2-Lb. Pkg. **\$1.19**

MEADOWDALE
SLICED BACON
49¢ lb.

HOME-MADE
FRESH SAUSAGE
59¢ lb.

JIFFY MARKET

FRESH BAKERY

Pies - Cakes - Rolls - Cookies

Bread - Cup Cakes - Donuts - Others

Old German Pretzels Wed. & Sat. Afternoons.

DINNER ROLLS

49¢ doz.

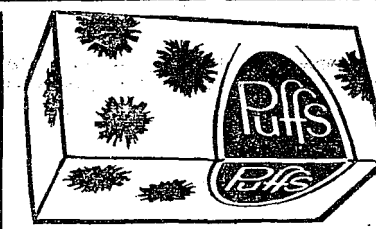
FRESH MERCHANDISE ARRIVES 1 P.M. EACH AFTERNOON.

MIRACLE WHIP .. 1 Quart Jar **48¢**

RISDON'S
WHIPPING CREAM, 1/2 pt. 25¢

CALIFORNIA
HEAD LETTUCE .29¢

AGAR
CANNED HAM 5 Lbs. \$3.99



2 200-Ct. Pkgs. 49¢

STARKIST CHUNK STYLE
TUNA ... 6 1/2-Oz. 35¢

CHARMIN
Toilet Tissue, 4-roll pkg. 39¢

DUNCAN HINES
LAYER CAKE MIXES 1-Lb., 2-Oz. Box 29¢

CRISCO Shortening ... 3-Lb. Can **79¢**

PEPSI-COLA
1 Pint Bottle **8 pac 99¢**
EQUALS 1 GALLON

MICHIGAN SOUR CREAM 39¢ pt.

BIG TEN CARAMEL CORN 1-Lb. Bag 49¢



59¢ New Flavors

CANADA DRY SODA POP
Assorted Flavors 28-Oz. Bottle **19¢**

GARLIC BUTTERFLY CRISPS 6-Oz. Pkg. 49¢

HOLSUM
BROWN & SERVE ROLLS 2 pkgs 79¢

DAILEY'S PICKLES

POLISH DILLS Sweet Cucumber Slices POLISH DILLS
1/2 Gal. Jar **69¢** 16-Oz. Jar **35¢** 1 Qt. Jar **49¢**

EVERY DAY AFTER DAY LOW PRICES!!
RISDON'S
MILK Kleen-Maid BREAD 1 Gal. Crtn. 89¢ 1-Lb., 4-Oz. Loaf 19¢

MAXWELL HOUSE Coffee 1-Lb. Can **79¢**

MARATHON GAS PUMPS LOCATED AT **JIFFY MARKET**
Gas as well as Groceries - Meats - Beer - Wine - Bread - Pop - Ice Cream - Household Items
Milk - All at Everyday Low Supermarket Prices!



MARATHON REGULAR GAS 33.9 gal. Includes All Taxes

MARATHON PREMIUM GAS 37.9 gal. Includes All Taxes

It's Getting Cold!
PRESTONE ANTI-FREEZE \$1.79 Gallon

SPECIAL FAYGO POP

All Flavors - Mix or Match

5 1-Qt. Bottles \$1.00

OPEN from 6 a.m. to 11 p.m. Every Day.
OPEN SUNDAYS for Your Shopping Convenience

GALLUP-SILKWORTH PUMP & PANTRY

295 S. Main St., Chelsea Phone 475-7051

STOP COLD WINTER DRAFTS FLEXO-GLASS
CRYSTAL-CLEAR, FLEXIBLE PLASTIC
Flexo-Glass is the only plastic window material Guaranteed 2 Full Years.
WE HAVE THE GENUINE
CUT WITH SHEARS TACK OVER WINDOWS, DOORS, PORCHES
Available at
Chelsea Hardware
110 S. Main Ph. GR 9-6311

The BAKE SHOPPE

107 W. MIDDLE ST. PH. 475-8957

NOW OPEN

6:00 a.m. to 7:00 p.m.

MONDAY thru SATURDAY

Except Friday, 6:00 a.m. to 9:00 p.m.

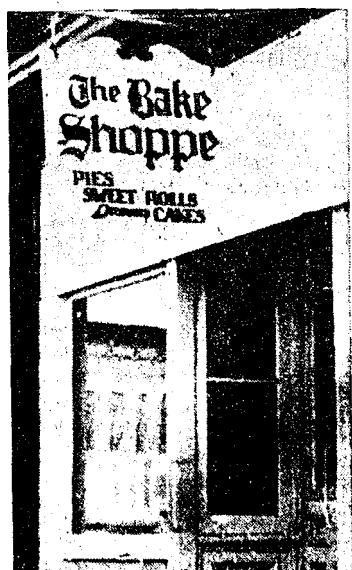
DELICIOUS PIES

ROLLS - DOUGHNUTS - COOKIES

COFFEE - MILK - TEA

HOT CHOCOLATE - PEPSI - ICE CREAM

GLENN ALLEN, MANAGER



Ads
Taken
5 p.m.
Tuesday

IT'S EASY TO
BUY-SELL-RENT-
HIRE & FIND WITH



Just
Call
GR 5-3581

WANT ADS

**The
Chelsea Standard**
WANT AD RATES

AD IN ADVANCE—All regular advertisements, 60 cents for 25 words or less, each insertion. Count each line as a word. For more than 25 words add 2 cents per word for each insertion. "Blind" ads or box numbers, 35c extra per insertion. **ADVERTISING RATES**—Same as cash in advance, with 15 cents bookkeeping charge if not paid before 5 p.m. "Use" preceding publication. Pay in advance, send cash or stamps and save cents. **PLAY WANT ADS**—Rate, \$1.10 per column inch, single column, width 11 inches. Spacing and 14-point light type. No borders or boldface type. Minimum 1 inch. **REDS OF THANKS OR MEMORIALS**—Single paragraph style, \$1.00 insertion for 10 words or less; 25c per word beyond 60 words. **DEADLINE**—5 p.m. Tuesday week of publication.

KNAPP SHOES

For Cushion Comfort
Robert Robbins
475-7282

FORMAL WEAR

RENTAL SERVICE
Dresses - Weddings - Special Events
6 different colors.

Foster's Men's Wear

43tf

ADMIRAL

Quality TV. All sizes in stock. Color, all with AFC control — some with Sonar remote control. Black and white, all sizes.
Service on all makes TV, Radio, and Stereo.

PORTER'S TV

212 Buchanan St.
Chelsea
Phone 475-8380

DEER PROCESSING

Skinned, Cut
and Wrapped

Manchester Frozen Food Lockers

Phone 428-5031
319 Duncan St., Manchester

WANTED — Distributors to sell Shakley Products. Nutritional supplements, LuVie beauty aids, deodorant cleansers: Basic Household, Basic Laundry, Basic Dishwasher. No investment. Call 5-4866.

MEN'S WORK CLOTHING

Winter Thermo
and Insulated
Underwear

Red Hunting Wear

DANCER'S Basement

8 DODGE CHARGER — Take over payments. Phone 475-2728.

WANT ADS

BOARDING, trimming, training. Town and Country Kennels, Jackson Rd. at Baker. NO 3-7200.

Gem Travel Trailers and Campers

PICK UP COVERS

4' ————— \$100.00

26' ————— \$179.00 and up

Triangle Sales

Chelsea 475-4502

CLOGGED SEWER

Reynolds Sewer
Service

We Clean Sewers Without Digging
Drains Cleaned Electrically
FREE ESTIMATES
2-YEAR GUARANTEE
Phone Ann Arbor NO 2-5277
"Sewer Cleaning Is Our Business—
Not a Side Line"

Specials of the Week

1969 Cutlass Supreme 2-dr. hardtop, air cond., bucket seats, vinyl top, console, p.s., p.b., (showroom new) \$2295
1971 Electra 225 4-dr. hardtop, vinyl top, demo new \$4695

USED CARS

1971 Olds Cutlass Supreme 2-dr. hardtop (air cond.) \$3195
1971 Buick Skylark Custom 2-dr. hardtop (like new) \$3195
1969 Buick Electra 225 Custom 2-dr. hardtop, air cond. \$2995
1970 Buick LeSabre 4-dr. sedan (low mileage) \$2495
1969 Chrysler Newport 2-dr. hardtop, vinyl top (air cond.) \$1995
1968 Toronado, clean (air cond.) \$1995
1968 Olds Vista Cruiser, 3-seat, (air cond.) \$2195
1968 F-85 Cutlass 2-dr., clean, low mileage \$1195
1967 Cutlass 4-dr. sedan \$1195
1968 Volkswagen Ghia \$1295
1966 Olds Delta 4-dr. hardtop (very nice) \$995
1966 Olds 88 4-dr. sedan \$895
1966 Pontiac 4-dr. sedan \$895
1965 Chrysler Newport 2-dr. hardtop \$595
1965 Chrysler Newport 4-dr. sedan \$595

SPRAGUE

Buick-Olds-Opel, Inc.
1500 S. Main St., Chelsea
Phone 475-8664

DEER PROCESSING — Prescott's Processing, 18314 Williamsville Rd., Gregory, Mich. 48137. Phone (313) 498-2149.

HELP WANTED — SALES — **FARMS SPECIALISTS**. Excellent opportunity for dynamic man who is familiar with farms, and farm land, around Chelsea-Dexter area, prefer licensed real estate salesman. Call Phil Spear, Spear & Associates, Realtors, 769-5750. x26

All Insurance Needs

In the convenience of your own home — or mine

N. H. Miles, Allstate

Call GR 5-8334 after 6 p.m.

WANT ADS

ROBERT PATRICK for home improvement, building and maintenance. Ph. 475-7460.

HAMMOND ORGAN teachers wanted to teach in their own homes. Call Grinnell Brothers, Ann Arbor. 662-5687.

CALL FRANK for all your carpet cleaning jobs, morning or week-end. Needs only 3 hours to dry. Only 10c per square foot. Phone now for free estimate, 761-4328. All work guaranteed.

PIANO TUNING, Chelsea and area. Facilities for reconditioning and rebuilding. Used piano sales; reconditioned grands and verticals. E. Elund. 426-4429.

Contractor Servicing Chelsea, Dexter and Manchester Areas

Complete Home Remodeling
Inside and Outside

Specializing in extra living space, recreation rooms, kitchens and paneling. Installing all aluminum products, 5" eavestroughs, custom-made awnings, windows and doors, aluminum siding in many selected colors and styles.

Please Call

DALE COOK

Chelsea 475-8863

FRISINGER

Chelsea

NEW LISTINGS

NORTH ST., 3-bedroom ranch.

WASHINGTON ST., 5-bedroom, good, older home. Central location.

WILKINSON ST., 3-bedroom ranch, 2-car garage.

FARMS

30 ACRES, Manchester schools. Home needs work. Located on Bethel Church Rd.

108 ACRES rolling land, Manchester schools. Barn and well on property.

71 ACRES, Chelsea schools. Barn and 4-bedroom home.

10-ACRE building sites, Dexter schools.

COMMERCIAL BUILDING Downtown Chelsea, 3,600 sq. ft. Plenty of parking. Immediate occupancy. Terms available.

FRISINGER REALTORS

Chelsea 475-8681

Eve, Herman Koenn 475-2613
Hope Bushnell 475-7180
Paul Frisinger 475-2621
George Frisinger 475-2903

1966 BELVEDERE 2-door hardtop 318 4 bbl., Torqueflite, new Hi-Jackers, new tape player, custom steering wheel. Runs great. Completely rust-proofed. \$900 firm. Phone 475-2853.

FOR SALE — 1964 LeSabre 4-door, \$200. Runs like a top. Call 475-2091.

YARD SALE — Rain or shine, antiques, collectibles and miscellaneous items, Friday and Saturday, Nov. 19 and 20, 10 a.m. to 5 p.m. 1036 Guinan Rd., Sugar Loaf Lake. Phone 475-2242.

BY OWNER at Cavanaugh Lake — Frontage on two lakes, beautiful, well-landscaped, 7-room home. Two full baths, fireplace, three bedrooms, could be four. Phone 475-2234.

HORSE SHOEING, corrective trimming and shoeing, winter shoes. Call Buck Myers, phone (517) 546-1510.

REAL ESTATE

6 ACRES, Sylvan township building lot. Price: \$8,000. Land contract available.

SYLVAN TOWNSHIP — Well located 64 acres excellent, level land.

R. D. Miller

REAL ESTATE

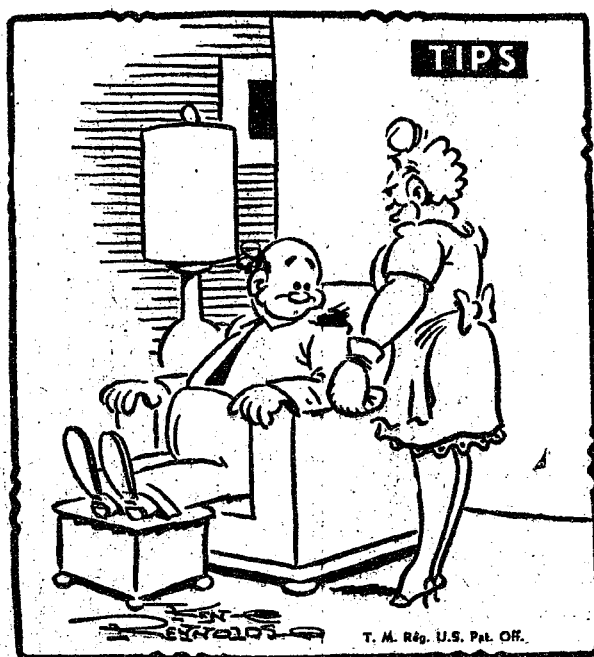
Real Estate Broker
475-7311
15775 Cavanaugh Lake Rd.
Chelsea, Mich.

ELECTROLUX VACUUM CLEANERS

SALES AND SERVICE

JAMES COX

Ph. 428-2931 or 428-8221
Manchester



"Want to buy the house I saw in the Standard Want Ads
— or shall we first negotiate?"

WANT ADS

SORRY SAIL is now a merry gal. She used Blue Lustre rug and upholstery cleaner. Rent electric shampooer \$1. Dancer's.

NO HUNTING SIGNS

Now available
at

Chelsea Standard
300 N. Main St.

Choice of the Country Gentleman

that likes spectacular view. This home has four bedrooms, fireplace, family room, and recreation room. Nice barn, trap shoot. Adjoining many acres of State Recreation.

NEAR CHELSEA — 10 vacant acres rolling, some trees. Land contract available.

LOW COST HOUSING: 1964 10' by 60' mobile home, 3 bedrooms, on 1/2 acre. Immediate possession. Call for particulars when you can move in.

1970 DOUBLE WIDE mobile home, on 1/2 acre land. Owner anxious.

1/2 ACRE, zoned for mobile home. Septic, well and electricity in. May be purchased on land contract.

Howell Town & Country, Inc.

Finckney Office.
CARLIE WEIDMAN, Rep.
Phone 878-3177.

APPLES — Pick your own. Apple Hill Orchard. Fresh cider and donuts. Open daily 9 a.m. to 6 p.m. 4260 Willis Rd., 1/2 mile east of Ypsilanti Hospital off US-23. Phone 434-2828.

FAMILY BIBLES REPAIRED — Academy Book Bindery, 3225 Central, Dexter. Phone 426-8081.

Just Arrived FANTASTIC OPTIGAN ORGAN

WITH BUILT-IN RHYTHMS
AND
SPECIAL EFFECTS

Anyone can play this new organ immediately.

Only \$399.95

Al Nalli Music

Phone Chelsea 475-7215

WANT ADS

NEED HOLIDAY MONEY? We need people to demonstrate our high-quality non-toxic, non-caustic, non-polluting home care products. Much more fun than work. 1-3 hours per day. Your own schedule. National advertising will begin soon, and we need your help. Please call for details. 475-5161.

SLACKS & JEANS

Ladies, Men's,
Boy's & Girl's

Hundreds

To Choose from

at

DANCER'S

22

Buying Or Selling?

Property does sell in the winter time. If you (or a friend) are thinking of buying or selling, don't hesitate to give us a call, and we will be pleased to discuss your property with you.

Over 200 salesmen working for you through our multiple listing service.

Over 200 salesmen working for you through our multiple listing service.

Over 200 salesmen working for you through our multiple listing service.

Over 200 salesmen working for you through our multiple listing service.

Over 200 salesmen working for you through our multiple listing service.

Over 200 salesmen working for you through our multiple listing service.

Over 200 salesmen working for you through our multiple listing service.

Over 200 salesmen working for you through our multiple listing service.

Over 200 salesmen working for you through our multiple listing service.

Over 200 salesmen working for you through our multiple listing service.

Over 200 salesmen working for you through our multiple listing service.

Over 200 salesmen working for you through our multiple listing service.

Over 200 salesmen working for you through our multiple listing service.

Over 200 salesmen working for you through our multiple listing service.

Over 200 salesmen working for you through our multiple listing service.

Over 200 salesmen working for you through our multiple listing service.

Over 200 salesmen working for you through our multiple listing service.

Over 200 salesmen working for you through our multiple listing service.

Over 200 salesmen working for you through our multiple listing service.

Over 200 salesmen working for you through our multiple listing service.

Over 200 salesmen working for you through our multiple listing service.

Over 200 salesmen working for you through our multiple listing service.

Over 200 salesmen working for you through our multiple listing service.

Over 200 salesmen working for you through our multiple listing service.

Over 200 salesmen working for you through our multiple listing service.

Over 200 salesmen working for you through our multiple listing service.

Over 200 salesmen working for you through our multiple listing service.

Over 200 salesmen working for you through our multiple listing service.

Over 200 salesmen working for you through our multiple listing service.

Over 200 salesmen working for you through our multiple listing service.

Over 200 salesmen working for you through our multiple listing service.

Over 200 salesmen working for you through our multiple listing service.

Over 200 salesmen working for you through our multiple listing service.

Over 200 salesmen working for you through our multiple listing service.

Over 200 salesmen working for you through our multiple listing service.

Over 200 salesmen working for you through our multiple listing service.

WANT ADS

SPIKE'S FLEA MARKET

ANTIQUES and COLLECTIBLES

Every Saturday
and Sunday

11 a.m. to 7 p.m.

Auctions
Every Saturday

at 7 p.m.

Dealers and public invited.

4065 Page Ave.
Michigan Center, Michigan
(Page Ave. Exit, east 7/10 mile)
Phone (517) 764-0250

x13tf

Real Estate For Sale

OVERLOOKING INVERNESS golf course — New 3-bedroom brick, full basement, garage. Brand new. \$48,500.

SAME VIEW — 3-bedroom, aluminum siding, 2 1/2-car garage. \$37,500.

EXECUTIVE HOME — 1-year-old, 3 bedrooms, family room with fireplace, central air conditioning. 2300 sq. ft. 1 1/2 acre lot. Close to town. \$60,000.

CLARENCE WOOD

BROKER

Efficient PERSONAL Service

648 Flanders St.
Phone 475-2033

18tf

Big Selection YARD GOODS and NOTIONS at DANCER'S

22

Buying Or Selling?

Property does sell in the winter time. If you (or a friend) are thinking of buying or selling, don't hesitate to give us a call, and we will be pleased to discuss your property with you.

Over 200 salesmen working for you through our multiple listing service.

Over 200 salesmen working for you through our multiple listing service.

Over 200 salesmen working for you through our multiple listing service.

Over 200 salesmen working for you through our multiple listing service.

Over 200 salesmen working for you through our multiple listing service.

Over 200 salesmen working for you through our multiple listing service.

Over 200 salesmen working for you through our multiple listing service.

Over 200 salesmen working for you through our multiple listing service.

Over 200 salesmen working for you through our multiple listing service.

Over 200 salesmen working for you through our multiple listing service.

Over 200 salesmen working for you through our multiple listing service.

Over 200 salesmen working for you through our multiple listing service.

Over 200 salesmen working for you through our multiple listing service.

Over 200 salesmen working for you through our multiple listing service.

Over 200 salesmen working for you through our multiple listing service.

Over 200 salesmen working for you through our multiple listing service.

Over 200 salesmen working for you through our multiple listing service.

Over 200 salesmen working for you through our multiple listing service.

Over 200 salesmen working for you through our multiple listing service.

Over 200 salesmen working for you through our multiple listing service.

Over 200 salesmen working for you through our multiple listing service.

Over 200 salesmen working for you through our multiple listing service.

Over 200 salesmen working for you through our multiple listing service.

Over 200 salesmen working for you through our multiple listing service.

Over 200 salesmen working for you through our multiple listing service.

Over 200 salesmen working for you through our multiple listing service.

Over 200 salesmen working for you through our multiple listing service.

Over 200 salesmen working for you through our multiple listing service.

Over 200 salesmen working for you through our multiple listing service.

Over 200 salesmen working for you through our multiple listing service.

Over 200 salesmen working for you through our multiple listing service.

Over 200 salesmen working for you through our multiple listing service.

Over 200 salesmen working for you through our multiple listing service.

Over 200

WANT ADS

JS for transit mixed con-
Kump Bros. Gravel Co.
Chelsea 475-2530, 4920 Love-
d, Grass Lake, Mich. x40tf
CONTRACTS PURCHASE-
Call R. A. McLaughlin, 475-
r (517) 366-7765. x12tf
CHING—Water, electrical
footings, etc., 4 to 14 inch-
s, 0 to 6 feet deep. Call
Slocum, 475-7611 evenings. x8tf

\$31,500.00

I Put You In This
Sorgeous Home
The Chelsea Area
By Christmas

Santa a brand new chimney
come down, in a home so
with extras, even he won't
it.

For Example

acre lot
t to Half Moon Lake State
k-out basement
y carpeted
washer
e
rigrator
drooms
ms and screens
ad ½ baths
lea schools
taxes

CALL 663-1935

un appointment to see this
utiful home. You won't be

W. C. WEBER
CONST. CO.

her lots available in the Chel-
area. We will build your new
on one of our lots or yours.
over 100 plans from which to
you are sure to be pleased.

CALL 663-1935 NOW

W. C. WEBER
CONST. CO.

Chelsea's premier Builder
828 12290 Jackson Rd. x21tf

LETED—Local resident desires
lding site of 10 acres or less
helsea School District. Cash.
e phone 475-7681. -22

K WANTED—House work by
day. Ph. 475-7732. -23

SALE—Steinway profession-
upright piano, ebony, 1 year
\$1,500. Phone 475-2795. 19tf

WANT ADS

WATKINS QUALITY PRODUCTS.
Famous for vanilla and spices.
Peter Miller, phone 426-4126 after
4:30 p.m. x22
TRAVEL TRAILERS—13-ft. and
up, 10x55 ft. trailers. John R.
Jones Trailer Sales, Gregory, Mich.
Phone 498-2655. x43tf
CAR RENTAL by the day, week-
end, week or month. Full insur-
ance coverage, low rates. Call Lyle
Christwell at Palmer Motor Sales
GR 5-3271. 25tf
CAR & TRUCK LEASING. For
details see Lyle Christwell at
Palmer Motor Sales, GR 5-3271.
49tf

WILL DO BABY-SITTING in my
own country home on Cavanaugh
Lake Rd. by elderly lady. Any
age. Phone 475-8033 anytime. 23
FOR SALE OR TRADE—Mobile
home, 1959 Anderson, 50'x10' 2
bedroom deluxe. Sharp. Trade for
small cottage or cabin, Chelsea
area preferred, or for mobile home
property. Phone Gordon Malloy, 1-
291-3226. x23

UNUSUAL OPPORTUNITY

With a company on the move doing
business in United States, Can-
ada and 16 countries in Central and
South America, needing 1,500 more
men this year, request crop service
sales representatives in Chelsea.
Dexter area to assist in Crop Ser-
vice Department in agricultural
field. Do not answer unless you are
genuinely interested in growing
with a growth company, and earn-
ing top dollar. Recent agricultural
background beneficial. Should you
qualify, personal interview will be
arranged. Apply at once to Na-
churs Plant Food Company, Box
500, Marion, Ohio 43302.

ATTENTION:

Otto Hannewald
SALES MANAGER x22

HELP WANTED—House work by
the day. Ph. 475-7732. -22

SLEEPING ROOM for rent. Direct
heat, private parking space, new-
ly decorated. 163 Orchard St. 20tf

FOR SALE—1964 Pontiac 4-dr.
sedan. Power steering, power
brake. Car in very good con-
dition. See at 616 S. Main St., or
phone 475-8563. -22

FOR CHRISTMAS—Hand knitted
ponchos, small, medium and
large. Phone 475-7391. -22

EXPERIENCED, degreed account-
ants offer tax and monthly ac-
counting service. Reply in confi-
dence, Box NO-11. -28

TROMBONE LESSONS, \$2. First
lesson free. Russell Maurer. Ph.
475-8353 after 3:30 p.m. -22

1971 MAVERICK GRABBER, pri-
ced to sell. Phone 475-7749 after
6 p.m. -24

FOR SALE—1968 mobile home,
reasonable priced, located at 9961
Harr Rd. Grass Lake, 3 miles
north of Waterloo. Phone 596-2861
after 4 p.m. x23

WANT ADS

GUITAR INSTRUCTION. Classi-
cal, folk, pop. Emphasis on the-
ory. Only \$3.50 for ½ hour. Phone
475-1129. x47tf
FOR RENT—Fair Services Center
for meetings, parties, wedding
receptions, etc. Weekdays or week-
ends. Contact John Wellnitz, phone
475-4431. -27

CUSTOM TAXIDERM—Call
Jim's Taxidermy Shop, 475-2805.
17tf

TIES MADE TO ORDER—Four or
five inches wide. Call 475-2772.
-22

CHRISTMAS BAZAAR—Saturday,
Dec. 4, 1971. The VFW Auxil-
iary to Post 4076 is having their
Christmas Bazaar and bake sale at
Sylvan Town Hall beginning at 10
a.m. x24

THORNTON
475-8629

JUST LISTED!

COLONIAL—7-room, 3-bedroom,
one acre, partially remodeled,
within Village. Priced for quick
sale.

RANCH HOMES

ENCLOSED PORCH—Large lot,
excellent location, 3-bedroom,
priced to sell!

PRIVATE YARD—2 baths, 3 bed-
rooms, fireplace, recreation room
and an anxious owner!

BRICK—Fireplace, dining room,
family room, 3 bedrooms on the
edge of Village.

Member

MULTIPLE LISTING
Service

LAKEFRONT

CAVANAUGH LAKE—Complete-
ly remodeled, 2 bedrooms, elec-
tric heat, wooded lot. Terms.

ISLAND LAKE—Brick ranch, fire-
place, fabulous view, 1½ baths,
many extras. . . plus 8-bedroom
year-around cottage for income
purposes.

PATTERSON LAKE—Just 75 feet
from the water, a beautifully re-
modeled home, fireplace, and many
extras.

BUILDING SITES: Cavanaugh
Lake, Portage Lake.

ACREAGE

3 ACRES—Dexter Schools.

9 ACRES—Chelsea Schools.

9 ACRES—Chelsea Schools.

10 ACRES—Chelsea Schools.

40 ACRES—Manchester Schools.

63 ACRES—Dexter Schools.

John Pierson
or
Robert H.

THORNTON

Realtors
475-8629, eve. 475-8857, 475-2064
22tf

WANT ADS

REPAIR SERVICE for household
refrigerators, freezers and air
bake disposers. Call Bill, 426-444.
x12tf
DO YOU NEED masonry work
done? Phone Ken Young, 426-
3342. Basement laid for 50¢ per
block. Free estimates on brick
work and fireplaces. -x27

FOR RENT—Deluxe motor home,
sleeps eight, fully self-contained,
reserve now for your hunting or
vacation trip. Auto Plaza Inc., Na-
tional Car Rental Licensee. Phone
662-4000. -x22

FOR SALE—'65 Dodge. 383 auto-
matic, good condition. Phone any
time, 475-2782. -x22

FOR SALE—'64 Dodge convertible,
383, four-speed, excellent body.
Call 475-2782. -x22

FOR SALE—1971 Ford half-ton
pick-up, 6-ply tires, radio and
heater, air conditioning, power
brakes, power steering, saddle tank,
low mileage. Call 475-2022. -x21

PART BRITANNIA PUP—Eight
weeks old, shots, female, reason-
able. Phone 482-8013. -x23

FOR RENT—Nice 2-bedroom trail-
er, near Stockbridge. Only 10
minutes from Chelsea. No children
or house pets. Call (517) 851-8970.
-x23

VACUUM CLEANER REPAIRS—
All makes and models. Factory
authorized service on many makes.
Pick-up and delivery available. Ph.
426-8850. -x22

RUG AND UPHOLSTERY Sham-
pooning Cleaning \$7.50 to \$10 per
room, \$5 per piece. "Clean car-
peting by removing dust first."
Free estimates. Ph. 426-8850. -x22

UPRIGHT PIANO—Good condi-
tion, \$150. Ph. 475-2503. -x22

SUPER BOWL GAME, Chelsea.
High school Varsity vs. Faculty,
tonight, 7:30 p.m. Adults, \$1.00.
Children, 50 cents. -22

SUPER BOWL GAME, Chelsea.
High school Varsity vs. Faculty,
tonight, 7:30 p.m. Adults, \$1.00.
Children, 50 cents. -22

SUPER BOWL GAME, Chelsea.
High school Varsity vs. Faculty,
tonight, 7:30 p.m. Adults, \$1.00.
Children, 50 cents. -22

SUPER BOWL GAME, Chelsea.
High school Varsity vs. Faculty,
tonight, 7:30 p.m. Adults, \$1.00.
Children, 50 cents. -22

GUITAR LESSONS given for be-
ginners, for a reasonable fee.
Folk and rock music. Please call
475-8947. -22

TWO ROOMS FOR RENT—Re-
tired people for second shift
workers. Also two free puppies.
Call 475-8938. -23

IRONING—Stockbridge, phone 851-
8273. -23

BABYSITTING in my home. Ages
1 through 5. Ph. 475-4011. -23

I'M LOOKING for a special some-
one—Is your family all grown?
Husband gone all day? Our chil-
dren, aged 2 and 4, need a moth-
er's love while I work. Please call
Shari Roberts, 475-8904. All terms
negotiable for right person. -22

WANTED—House work by the
hour. Phone 1-517-698-2251. -23

FOR RENT—Near Chelsea, apart-
ments furnished or unfurnished.
Call after 6 p.m. or Saturday and
Sunday, 662-1083. -22tf

FREE—Darling half Schnauzer
puppies. Phone 475-8488. -22

WANT ADS

HELP WANTED—Only courteous,
efficient, and dependable need
apply. Black Sheep Tavern, Main
Chester, Mich. Call after 11 a.m.
-23

ODD JOBS WANTED—Group of
high school students will do odd
jobs to earn money for Quebec-
Montreal trip. Phone 475-8219 or
475-2033. -22

ODD JOBS WANTED—Group of
high school students will do odd
jobs to earn money for Quebec-
Montreal trip. Phone 475-8219 or
475-2033. -22

FOR SALE—4 mag wheels, 2 x
F80 15 tires, 2 studded 13"
snow grips, like new, 1 Rupp Go-
Kart, 7½ h.p. chainsaw engine.
For information call 475-7401. -22

WANTED—Used pool table in good
condition. Call 475-8130 after
5:30 p.m. -22

WANTED—People of all ages.
Come and enjoy gospel hymn
singing featuring the Crossmen
Quartet, at Chelsea Baptist church,
Saturday, Nov. 20, at 7:30 p.m. 22

FOR SALE—Bedroom set, includes
double bed and vanity with mir-
ror. New golf clubs, Haig ultra
irons, Spaulding MV2 set, two pro-
star golf club sets including bag
and putter. Phone 475-2376. -23

FOR SALE—Craftsman lawn
vacuum, \$45. Phone 475-7398. -22

CARD OF THANKS

We wish to thank all friends,
neighbors, and Chelsea Medical
Clinic—especially Dr. Botsford
and Dr. Papo—for all their kind
deeds while in the hospital and
at home. We certainly do appre-
ciate your loving concern for us.

Everett and Grace Van Riper
and family.

THANK YOU

We wish to sincerely thank
everyone for their tremendous
support of the Christmas Fantasy
Bazaar sponsored by the First
United Methodist church. A spe-
cial thanks to all who worked so
willingly to fill our booths with
hand-made items, to all who work-
ed and donated the many needed
items, and to all who assisted in
many special ways.

Sincerely,
Christmas Bazaar Committee.

THANK YOU

I would like to say a big thank-
you to those who sent cards, flow-
ers, gifts and for all calls while
I was in the hospital and since
my return home.

Norman Schmidt.

CARD OF THANKS

I want to thank the Rebekahs
for flowers, fruit and cards and
the Cavanaugh Lake-North Syl-
van Grange for flowers, fruit and
calls and the elderly group of the
Methodist church for calls, cards
and food brought me after my re-
turn home. I want to thank my
friends and neighbors for all they
did to help me during my stay
in the hospital and since my re-
turn home.

Ruth Riemenschneider.

Jaycees Lower
Age Limit to 18

(Continued from page one)

Jaycees attended forums on
leadership in action, publications,
retention, records and recognition,
and membership.

Auxiliary members voted to
approve further steps in adding
an honorary membership section
to the state by-laws to cover pos-
sible chapters in institutions for
women.

Auxiliary members attended
workshops on Spaulding for Chil-
dren and the Michigan Kidney
Foundation.

Sue Schroen, a graduate of
Chelsea High school, conducted
the forum and gave a slide pre-
sentation on Spaulding for Chil-
dren.

Dr. Thomas Hall of Traverse
City was guest speaker at the
Kidney Foundation forum.

The Chelsea Jaycee Auxiliary
not only won the travel certifi-
cate for their division, presented
at the state meeting, but also
the Grand Travel Trophy.

Don't drive on snow tires in
warm weather months, the Tire
Industry Safety Council warns.
There is a very high heat build-
up in these deep-tread, extra duty
tires, causing tread to wear rap-
idly.

Complete feeding rations for
all your livestock, poultry.

FARMERS'
SUPPLY CO.

PHONE GR 5-5511

Right start
with right
FEEDS

Step up milk production,
with Dairy Feeds, scientific-
ally formulated, balanced
and blended to make more
milk, and more profits.

Complete feeding rations for
all your livestock, poultry.

FARMERS'
SUPPLY CO.

PHONE GR 5-5511

School Board Briefs

Present at the Nov. 15 meeting
of the Chelsea Board of Educa-
tion were President Storey, Trus-
tees Smith, Koenn, Haselschwardt,
Irwin and Schaefer, Superintendent
Cameron, Business Manager Mills,
Principals Conklin and Wojcieki
and Assistant Principal Lapandow-
ski.

Also present were Miss Barbara
Wenk and Charles Ritter.

Meeting called to order at 8:05
p.m. by President Storey.

Motion by Haselschwardt, sup-
ported by Schaefer, to accept the
minutes of the Nov. 1 meeting as
presented. All ayes.

Business Manager Mills present-
ed the financial report as of Nov.
1, 1971. The new computer system
was discussed at length.

Miss Barbara Wenk reported on
the progress of the Drug Educa-
tion Committee. The committee is
composed of all principals and
representative teachers from each
school. Students have been invol-
ved at the high school level and
more students and adults from the
community will be involved in the
development of the curriculum. It
is hoped that the program will be
ready for the 1972-73 school year.

Trustee Schaefer of the Plan-
ning Committee reported that
the committee met and discussed
several needs of the school dis-
trict for future buildings and fa-
cilities. Additional meetings are
planned to further explore the
needs of the district.

Trustee Haselschwardt reported
that the Labor Relations Commit-
tee has not met. Neither has the
committee met to make a recom-
mendation of secretarial salaries.

President Storey read the fol-
lowing statement regarding the
evaluation of the superintendent:
"The Chelsea School Board of
Education annual (1970-71) eval-
uation of Superintendent Camer-
on took place at a working ses-
sion on Nov. 2 with all board
members present and partici-
pating. Evaluation results are con-
fidential to the parties concerned.

"The format of the evaluation
covered 25 items and followed, in
a general way, that of the Fort
Worth, Tex. Board of Education
as explained in the July, 1971 is-
sue of the American School Board
Journal. The evaluation has been
discussed with Superintendent
Cameron. Board of Education ac-
tion regarding the superinten-
dent's new contract will take
place by Jan. 31."

Superintendent Cameron respon-
ded, "School board policies have
not been fulfilled in the evalua-
tion of the superintendent."

Motion by Koenn, supported by
Smith, to commend the Chelsea
High school football team and
coaches for winning the South-
eastern Conference championship,
for their undefeated season, for
their Number One rating in the
state for class "B" schools, and
for their sportsmanship during the
season. All ayes.

Business Manager Mills report-
ed that the Beach school athletic
field grading is progressing
smoothly with completion ex-
pected by the end of the week. The
paving of the elementary play-
ground areas will be completed
this fall if the weather permits.

Mills' report said that the loss
of equipment in the athletic field
storage building fire has been
turned in to the insurance com-
pany. The furnace explosion at
the high school was also reported
to the insurance company, and
estimates of repair costs are \$6-
200 plus the cost of replacing the
glass in the boiler room.

Motion by Haselschwardt, sup-
ported by Koenn, to empower the
Physical Plant Committee to meet
and approve installation of new
controls on the boiler which was
not involved in the explosion. All
ayes.

Mills' report continued that the
Nov. 30 election on the proposed
Washtenaw County Medical Re-
tardation Center will be held in
the Sylvan Township Hall with

the polls open from 7 a.m. to 8
p.m.

The Michigan Association of
School Boards is now offering an
accidental death policy for board
members on official board travel.
This was referred to the Busi-
ness Administration and Finance
Committee.

Mills concluded his report by
reading a report written by Alex
Shelton of the Department of Li-
censing and Regulations, Electrical
Administrative Board. The report
was in reference to the whirlpool
in the high school athletic lock-
er room. In the report Shelton
indicated that the existing wiring
was UL approved, and he also
made some specific recommenda-
tions for changes if the school de-
sired.

Motion by Haselschwardt, sup-
ported by Schaefer, to accept the
minutes of the Nov. 1 meeting as
presented. All ayes.

Business Manager Mills present-
ed the financial report as of Nov.
1, 1971. The new computer system
was discussed at length.

Miss Barbara Wenk reported on
the progress of the Drug Educa-
tion Committee. The committee is
composed of all principals and
representative teachers from each
school. Students have been invol-
ved at the high school level and
more students and adults from the
community will be involved in the
development of the curriculum. It
is hoped that the program will be
ready for the 1972-73 school year.

Trustee Schaefer of the Plan-
ning Committee reported that
the committee met and discussed
several needs of the school dis-
trict for future buildings and fa-
cilities. Additional meetings are
planned to further explore the
needs of the district.

Trustee Haselschwardt reported
that the Labor Relations Commit-
tee has not met. Neither has the
committee met to make a recom-
mendation of secretarial salaries.

President Storey read the fol-
lowing statement regarding the
evaluation of the superintendent:
"The Chelsea School Board of
Education annual (1970-71) eval-
uation of Superintendent Camer-
on took place at a working ses-
sion on Nov. 2 with all board
members present and partici-
pating. Evaluation results are con-
fidential to the parties concerned.

"The format of the evaluation
covered 25 items and followed, in
a general way, that of the Fort
Worth, Tex. Board of Education
as explained in the July, 1971 is-
sue of the American School Board
Journal. The evaluation has been
discussed with Superintendent
Cameron. Board of Education ac-
tion regarding the superinten-
dent's new contract will take
place by Jan. 31."

Superintendent Cameron respon-
ded, "School board policies have
not been fulfilled in the evalua-
tion of the superintendent."

Motion by Koenn, supported by
Smith, to commend the Chelsea
High school football team and
coaches for winning the South-
eastern Conference championship,
for their undefeated season, for
their Number One rating in the
state for class "B" schools, and
for their sportsmanship during the
season. All ayes.

Business Manager Mills report-
ed that the Beach school athletic
field grading is progressing
smoothly with completion ex-
pected by the end of the week. The
paving of the elementary play-
ground areas will be completed
this fall if the weather permits.

Mills' report said that the loss
of equipment in the athletic field
storage building fire has been
turned in to the insurance com-
pany. The furnace explosion at
the high school was also reported
to the insurance company, and
estimates of repair costs are \$6-
200 plus the cost of replacing the
glass in the boiler room.

Motion by Haselschwardt, sup-
ported by Koenn, to empower the
Physical Plant Committee to meet
and approve installation of new
controls on the boiler which was
not involved in the explosion. All
ayes.

Mills' report continued that the
Nov. 30 election on the proposed
Washtenaw County Medical Re-
tardation Center will be held in
the Sylvan Township Hall with

ported by Irwin to renew the
Educational Policies Service of the
NASB at a cost of \$100.

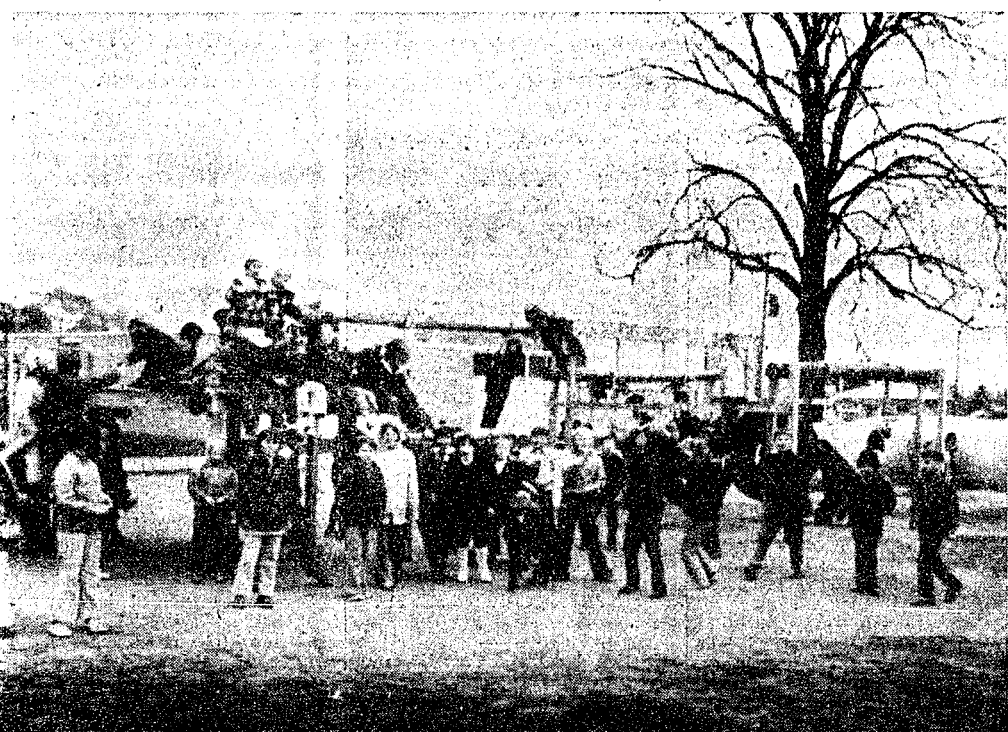
Cameron also reported on the
legislative survey of the Michigan
Association of School Boards. The
survey was in regard to Substi-
tute Senate Bill 365 which would
establish not more than 26 nor
less than 16 intermediate school
districts for the State of Michi-
gan.

Motion by Koenn, supported by
Schaefer, to express disapproval
of Substitute Senate Bill 365 on
intermediate School District Re-
organization. All ayes.

Superintendent Cameron report-
ed that the State Department of
Education has developed a voca-
tional education program for the
state. Local school districts must
conform to this program for 1972-
73 in order to receive reimburse-
ment of their programs.

Cameron concluded by report-
ing that an operational millage
election will be necessary for the
1972-73 school year.

TOD



THE MOST POPULAR PLACE at North school now is the playground. North School Boosters—parents and teachers and friends—held their last planned work day of the season Saturday, Nov. 6, finishing the platform and installing tire swings, wood and rope climbing equipment, etc., obviously put into immediate use. An old boat and some rope climbing nets will be added to the playground at a later date. Principal Robert Benedict said "the equipment's getting lots of use, it's obviously serving the purpose it was designed to serve, and the kids really get lots of enjoyment out of it." Benedict also said that both the lower and upper elementary sections of the playground have enough play equipment—most of it donated and built by North School Boosters.

HEAVY? The earth's entire atmosphere weighs 5,700,000,000,000 tons. Just about one millionth the weight of the earth itself.

To check for safe tire tread depth, place a Lincoln penny between the grooves. If you can see the top of Lincoln's head, the tire is worn too thin.

Mrs. Mary Steinbach of the Chelsea Methodist Home was among those attending the smorgasbord at the Dexter Methodist church dining hall recently.



NORTH ELEMENTARY SCHOOL NOTES

THIRD GRADE—
Mrs. Peet, teacher

Since Thanksgiving is so close now we have been talking about the brave Pilgrims and their journey across the Atlantic to start a new life for themselves. During our discussions we have used the word "freedom" a lot. Freedom, we decided, can mean many different things. We think that you'll enjoy hearing what some of us think freedom means: Freedom is a holiday. Freedom is being along—Annette Kuhl. Freedom is to do what you want to do when you grow up and go where you want—Ross Stoffel.

Freedom is your mind. If you have nothing on your mind, no problems at all, I think that's freedom—Gina Gaudet.

Freedom is a holiday. Freedom is going away. Freedom is worshipping God. Freedom is going outside—Susan Satterthwaite.

Freedom is when you're not bossed around. Freedom is when you are free to leave your country when you want and you don't have to have permission—Paula Haist.

Freedom is when you get a day off work, or when you worship God, or when you are on a vacation—Bob Dickens.

Freedom is G.I.'s going away from the war—Chandler Lane.

Freedom is a place where you don't have to be ruled by a king or queen. It is when you can pick your own leader. You don't have to have a person yelling at you when you worship. It is not like being followed all the time. That is why the Pilgrims moved to a different country—Margaret Stirling.

Freedom is when you aren't all locked up in a cage or any other place that you can't get out of. Shorter idea—freedom's when you're free—Donna Finkbeiner.

Freedom is something good to be if you were a slave all your life. And it would be kind of good not to be in a cage all your life like Mr. Tiger and Mr. Lion and all the other animals. P.S. and if you want to have freedom just get out of the house—Matthew Harat.

It is good to have freedom. I couldn't stand it without freedom. If you weren't free you couldn't be happy—Shari Weber.

days, Deborah Connell, Chris Ford, Billy Haworth and Scott Robertson.

On Dec. 14, the fourth and fifth grade chorus will put on a Christmas program.

Mr. Schmunk, teacher
Reporter: Randy Stanley

This past Saturday the people that live around the school built a platform on the playground. They are building another platform on the playground for the little ones. We are going to play on the new set of toys.

The fourth grade had a Halloween party.

Eighteen families came to Open House.

Our books came yesterday. We all get to read some of the books. In Science we studied about how nature makes soil.

Mrs. Paplawsky, teacher.
Reporters: Dan Alber, John Dunn and Brad Knickerbocker

This week we have started a play. Yesterday we did the play for Mr. Schmunk. The name of the play is "It Started with a Doodlebug."

In Arithmetic we learned to multiply by two numbers with a place holder.

We made animal books. We made covers and punched holes in all our papers. We can keep them for our home library.

Tonya Williamson brought her dog Pierre to class one morning. Mary Beth Blanchard brought five kittens to show. They all had ribbons around their necks.

Some parents built some more playground equipment. Now there is something to do at recess.

We saw the movie "Peter and the Wolf." It was really funny.

FIFTH GRADE—
Mrs. Winkle, teacher
Reporters: Jill VanSlambrouck and Cathy Myers

In Social Studies we are studying about settlers settling the new world.

In Math we are multiplying by tens.

In English we are studying about exclamatory sentences. In

FOURTH GRADE—
Mrs. Hafer, teacher
Reporters: Chris Ford, Barbara Schardin, Leah Gaudet

A couple weeks ago, Chris Ford and Barbara Proctor made a Hawaiian bulletin board. We had Hawaiian dolls, lava and postcards and a catamaran boat and two outriggers.

Two weeks ago we had Open House and 26 out of 29 families came to our class room. At 8 p.m. we let off an imitation volcano.

Near Halloween we had a Halloween party. Mrs. Connell and Mrs. Myers brought all the goodies. We had donuts and cider. The first grade classes went around the rooms with their Halloween costumes on. We also made a Halloween bulletin board.

About three weeks ago, our class made some flags. We had Mrs. Paplawsky come in and judge the three best flags. Brett Copin won first place, he did a flag on Alaska. Kirk Myers won second place. He did one on a volcano in Hawaii. Leah Gaudet won the third place. She did one on deer. It said "Stand in peace." They all won a big candy bar!

In Arithmetic we are doing long divisions. Sometimes it is easy and sometimes it's hard.

About four weeks ago Mrs. Hafer's guinea pig died of pneumonia. We were all sad about it. Kirk Myers drew some pencil sketches of animals. They were very good.

We got new playground equipment for our playground.

In Social Studies we are talking about New Zealand. It is fun.

In Science we are making books about animals, where they live, what they eat and their habits. This month there are four birth-

Terry Chosen Delegate to National Conference on Aging

Governor William G. Milliken has invited Edward H. Terry to serve as one of the 59 state delegates to the second White House Conference on Aging to be held Nov. 29-Dec. 3.

Terry is executive director of the Retirement Homes of the Detroit Annual Conference of the United Methodist Church, Inc., which includes the Chelsea Methodist Home in Chelsea and the Boulevard Temple United Methodist Home in Detroit. Terry resides in Plymouth, but his office is located at 407 N. Main, Ann Arbor.

The second White House Conference on Aging will be dealing with the needs, priorities for action, and recommendations on aging, especially in the areas of income, health and mental health, housing and environment, nutrition, education, employment and retirement, retirement roles and activities, transportation and spiritual well being.

The principal task will be to arrive at a carefully weighted, comprehensive body of national policies which will give direction to action on behalf of older people at national, state and community levels. Terry will be working particularly in the field of housing for the aging.

In addition to being a delegate to the White House Conference on Aging, Terry is serving in other important capacities in the field of aging. He is president-elect of the Michigan Society of Gerontology, having been chosen at the October meeting of that body to take its leadership in 1972.

The purpose of the society is to serve the interests of those in Michigan who are concerned with service, research, training, and other aspects of the problems of aging and the aged, and to provide a forum for the exchange of certain foods and sent those in for UNICEF.

Glen Rooke brought a bird feeder that we put outside our window. It didn't take long for the sparrows to find it.

We really enjoy having Mrs. Wahl for art. Mr. Wehrwein for physical education and Mrs. Harlow for music.



EDWARD H. TERRY

information and for the mutual promotion of programs designed to improve the position and welfare of older people. Terry also serves on the Board of Directors of the Non-Profit Homes Association in the state. This group is made up of representatives of church and other non-profit homes for aging in Michigan.

Home Damaged By Fire, Smoke

A house owned and occupied by Mrs. Otto Jedele, 518 Chandler St., was heavily damaged by fire last Wednesday, Nov. 10.

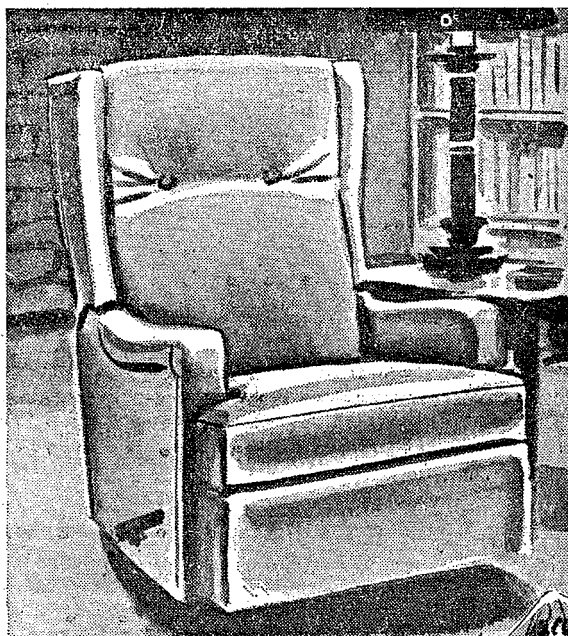
The fire, which was discovered at approximately 10:10 p.m., was apparently started by heating tape wrapped around water pipes in the garage.

The fire spread from the garage to the attic and into the house.

Fifteen men from the Chelsea Fire Department fought the blaze for more than two hours, but had it under control in approximately half an hour. Fire Chief James Gaken said.

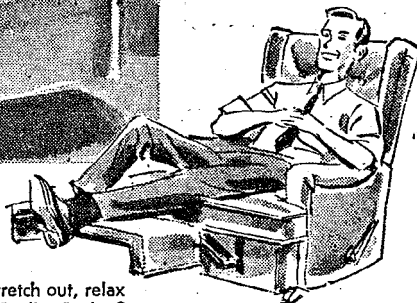
Fire damage was extensive, and the house also suffered heavy smoke and water damage. Gaken said.

LA-Z-BOY® RECLINA-ROCKER™



Style 846

Featuring the NEW and EXCLUSIVE *6-POSITION FOOTREST



When he comes home at night, he deserves to stretch out, relax and recline the way a man likes to! The La-Z-Boy® Reclina-Rocker™ is the gift chair all America is talking about... because it leads the world in comfort and beauty! There is no equal!

LAY-AWAY A LA-Z-BOY NOW FOR HOLIDAY GIVING

\$239⁹⁵

*Another La-Z-Boy® first, the extra-length, six-position footrest provides additional comfort and versatility for extra tall individuals, as well as average-size people, who really like to stretch out. Available only with La-Z-Boy®.

MERKEL HOME FURNISHINGS

Open Mon. & Fri. Until 9 p.m.

Phone 475-8621

No more dirty work with a self-cleaning Gas range.



Just think of it. You'll never have to get down on your hands and knees to scrape and scrub the dirty, greasy insides of your oven again. Because today's modern Gas ranges have self-cleaning ovens. Forget about baked-on splatters. And rock-like spills.

With a self-cleaning oven all you have to do is turn a knob and the messiest job in your home (oven cleaning) takes care of itself. Giving you time to take care of the more pleasant things in your life.

But a self-cleaning oven is just one good feature in today's modern Gas range.

With Gas you have the advantage of smokeless closed door broiling. Infinite heat control. And best of all, total economy. Because a modern Gas range uses less Gas to do the same job. And a Gas range costs about one-fourth as much to operate as an electric one.

So before the holidays, stop by your dealer or any Michigan Consolidated Gas Company showroom, and buy a new Gas range with a full range of features.

A new Gas range will save you Gas and money too. And remember—oven cleaning is no job for a lady.

MICHIGAN CONSOLIDATED GAS COMPANY
The future is great with Gas!

Santa has Christmas well in hand!



Because he joined our Christmas Club!

JOIN NOW!
There Is A Club Designed To Fit Everyone's Budget

Open Until 5:30 p.m. Friday Until Noon Saturday

YOUR LAST PAYMENT COUPON IS FREE
if you make other payments on schedule

YOU CAN CHOOSE THE CLASS THAT FITS YOUR BUDGET AND YOUR GOAL

\$.50 each week for 50 weeks	\$ 25.00
\$ 1.00 each week for 50 weeks	\$ 50.00
\$ 2.00 each week for 50 weeks	\$ 100.00
\$ 3.00 each week for 50 weeks	\$ 150.00
\$ 5.00 each week for 50 weeks	\$ 250.00
\$10.00 each week for 50 weeks	\$ 500.00
\$20.00 each week for 50 weeks	\$1,000.00

NOW... is the time to...



FIRST PAYMENT ON 1972 CHRISTMAS CLUB NOW DUE

CHELSEA STATE BANK



GERMAN TAUGHT HERE: German cooking is Mrs. Thomas Bust (left) and Mrs. J. R. are now busy translating several German recipes into easy steps for demonstration during German cookery class included in the Chelsea Study Club's Foreign Flavors-cooking school.

Foreign Flavors will be held on six consecutive Monday nights at the Chelsea High school cafeteria beginning Jan. 17. Registrations are a must, and may be obtained by calling Mrs. Bruce Galbraith or Mrs. Robert Merkel. The lesson in German cooking will conclude the series on Feb. 21.

Winhelfer-Budreau Wedding Revealed

and Mrs. Ralph Steinhalfer, Main, announce the marriage of their daughter, Dana to Michael Lee Budreau, Mrs. Betty Brown, 12000 Rd., Dexter, and William of Hartford.

Nov. 9 ceremony was performed by Chaplain B. M. Den, the Charleston Naval Base.

man and matron of honor Mr. and Mrs. Richard Webb Arleton.

anist for the double ring only was Mrs. B. M. Dennis. Her wedding, Dana wore a eighth empire styled white gown with full-length bell sleeves. Her veil was held by a of white rose buds.

new Mr. and Mrs. Budreau their home at 2829 Spruill Apt. A, Charleston Heights.

Girl Scouts

POOP 169—

Monday, Nov. 15, 24 girls from Troop 169 drove to the home of Eisenbeiser for a camp fire. We toasted marshmallows and made s'mores. Warren Eisenbeiser showed how to build a fire. It was and everyone enjoyed it.

Kim Harvey, scribe.

POOP 82—

took dues and had refreshments. Then we rehearsed a song we are going to do at the Meth. Home next week.

Wendy Myers, scribe.

veys show that tires are in less than one percent of all highway accidents. More than half the tires involved are

Make her Christmas colorful with Bulova

See our sparkling collection of new colored dial watches by Bulova. Very high fashion. And sensible, too. Because Bulova makes beauty with craftsmanship. So the Bulova you buy today will be a lasting gift, certain to please her for many, many years to come.

Enchanting round-faced watch with champagne or silver gray dial. 17 jewels. \$39.

Oval-faced beauty with gilt or blue dial. 17 jewels. \$40.

Contrasting markers on a champagne or navy blue dial. 17 jewels. \$45.

Breguetta numeral on a tortoiseshell dial. 17 jewels. \$55.

23 jewels. 14K solid gold case. Iridescent mother-of-pearl dial. \$85.

BULOVA... When the right time is not enough.

WINANS JEWELRY

Personalized Christmas Gifts Urged for Servicemen Overseas

For a serviceman overseas, Christmas is just about the loneliest time of the year. But by using a little personal touch in selecting his Christmas gift, the American Red Cross says, you may provide the spark to cheer his holiday and remind him that he is not forgotten by the folks back home.

Represented at every major military installation overseas and many of the smaller ones, the Red Cross has found that servicemen want meaningful gifts that are reminiscent of home and affection.

Red Cross Chapter Seeks Volunteers With Varied Talents

Washtenaw County Chapter of the American Red Cross announced today that volunteers are needed for all phases of Red Cross work. Many jobs are available for those people who desire to help others and wish to work for the improvement of their community.

Adult volunteers are urgently needed to work with the Red Cross Youth Council. This group consists of 40 young people who are very enthusiastic about helping others and learning more about their community. In order to continue the Youth Program, responsible adults are needed to help advise and work with these teen-agers.

Volunteers are also needed to work in the Red Cross Service to Military Families Department. A stenographer is needed to assist with correspondence; a librarian is needed to keep the resource files updated; and a community resource person is needed to work with the public. If you are interested in organized groups or clubs, your talents can also be put to use by the Service to Military Families Department.

Aside from the special needs listed above, the Red Cross always has the opportunity for volunteers to work in blood clinics; registering donors, serving refreshments, labeling bottles, etc. Your typing and filing talents can be most useful in the Blood Services Department as donor records must always be kept up-to-date.

If you enjoy driving, why not inquire about the Red Cross Motor Service? Experienced drivers are always needed to help deprived people in the county get to medical appointments, pick up volunteers to serve on blood clinics, and deliver blood from Detroit Regional Blood Center to area hospitals. You do not need your own car; and this work does not require you to volunteer on a regular basis. Red Cross provides necessary insurance coverage for drivers and passengers.

If you are interested in volunteer service or would like additional information, please contact Mrs. Marilyn Coulson, co-ordinator of Volunteer Services, Washtenaw County Chapter, American Red Cross, 2729 Packard Rd., Ann Arbor, phone 971-5300.

CUB SCOUT NEWS

DEN 9, PACK 445—

Last week we chose the dinner and assistant dinner and scribe. The dinner is Tom Ridd, assistant dinner is Kent Heller, and Jim Stock is the scribe. After that we made popcorn balls and had hot chocolate and ate the popcorn balls.

Cub Scouts of Den 9 are Bret Copin, Kurt Copin, Ray Zeigler, Tom Ridd, Brian Johnson, Carl Simpson, Kent Heller, Chris Ford, Sandy McLaughlin, Howard Whitaker, Jim Stock and Craig McLaughlin, tag-a-long. Mrs. McLaughlin is the den mother, and Mrs. Stock is assistant den mother.

Jim Stock, scribe.

DEN 5, PACK 445—

We went on a hike on the Potawatomi Trail, and we ate lunch. We walked five miles. We made Christmas cards for servicemen and we made a movie about cub scouts doing a good deed.

Mark Cole, scribe.

DEN 13, PACK 435—

Last week we made paper airplanes and Thanksgiving cards. We had the flag ceremony. We had to say the promise. We had to say the law of the pack too, and even the code. And Mrs. Lesser is helping us this month.

Mark Lesser, scribe.

VILLAGE BEAUTY SALON

LORETTA - CINDY - EULA
MARGE - ARLENE - SARAH

Now is the time to make your appointments for those holiday festivities. Get that BODY BERM to hold your long locks in place, or if you're not the long lock type, try our new BLOW COMB CUT. But don't delay because hair-do appointments are limited and the early-bird gets the worm.

107 N. MAIN PHONE 475-5421
OPEN MONDAY THRU SATURDAY
Evenings By Appointment

Snapshots of family and friends, tapes of familiar voices with personal messages and favorite foods are some of the items proposed. Current musical and comedy records or tapes, paperback books, special-interest magazines, soap bars on ropes and plastic picture or identification holders are possibilities.

The family or friend know the likes and dislikes of the person in mind and should cater to him, says the Red Cross.

As important as the contents of the package sent overseas, is the manner in which it is packed. Be sure fragile items are well cushioned. One very practical method is to use hometown newspapers for packing. This provides the additional bonus of reading matter for the man away from home. If home-prepared food is sent, be sure it is not perishable and that it is packaged in a metal air-tight container. Hard candies, nuts and other foods in vacuum packed containers are durable and easy to ship. Party crackers, smoked oysters, cheese and canned meats are delicacies that are relished.

Clothing should be carefully selected and usually upon specific request with geographical location and climate in mind.

The Red Cross recommends putting notes and letters in the packages to give the gifts a touch of closeness.

The postal service has announced the following dates as deadlines for overseas Christmas mailing:

Packages sent by surface mail should be mailed by Nov. 8. Items without airmail postage are shipped by space-available means and should be mailed by Nov. 22. Gifts to be shipped by parcel airmail should be posted by Nov. 26, and those sent by airmail by Dec. 10.

SCHOOL LUNCH MENU

Week of Nov. 22 through 24

Monday, Nov. 22—Hamburgers, buns, trimmings, cabbage salad, potato chips, fruit, milk.

Tuesday, Nov. 23—Barbecue, buns, pickles, buttered corn, apple crisp, milk.

Wednesday, Nov. 24—Thanksgiving dinner at school.



GRAND TROPHY WINNERS: Members of the Chelsea Jaycee Auxiliary pose with the Grand Travel Trophy awarded at the Jaycees Fall Board meeting held in Cadillac, Nov. 12 and 13. The Auxiliary also won the travel certificate for their division. Pictured with the trophy, held by Auxiliary President Sandra Brown, are (left to right) Joanne Rowe, Ann Steinaway, Barbara Updegraff, Mrs. Brown, Sue Cail and Barbara Robeson.

Vacation in Acapulco Enjoyed By Four

Mrs. Leon Chapman, Mrs. Genny Ginnney of Sugar Loaf Lake, Mrs. Dolly Alber, and Mrs. Harold Waller of Cavanaugh Lake have just returned from a week's vacation in Acapulco, Mexico.

The charter flight from Windsor, Canada to Acapulco was sponsored by the County Road Commission employees.

Highlights of the trip were watching the famous cliff divers dive at night by torch light, a bus tour of Mexico City, and a trip to Taxco through the Sierra Madre mountains.

Mrs. Chapman said that when the group left Acapulco it was 93 degrees. In Windsor four and one-half hours later, it was 31 degrees.

FRANKFURTER IS TOPS!

The most popular sausage in the U.S. today is the frankfurter, developed in Frankfurt, Germany during the 18th century. In this country the per capita consumption is more than 72 franks a year.

Subscribe today to The Standard!



CANDLEMAKING SUPPLIES

Now in Stock!

WAX - SCENTS - WICKS
MOLDS - DIES

TAILFEATHER BOUTIQUE

"A Fun Place To Shop"
105 N. Main Ph. Chelsea 475-2512

WANTED CEMENT & BLOCKWORK

All types—Poured walls, floors, drives and foundations.

CECIL CAUDILL

(517) 851-3847

Need an apartment? Use a Standard Want Ad!

CLOSEOUT!

A NEW LOT OF CARPETING AT DISCOUNT PRICES!

Ends of Rolls, Discontinued Patterns, etc., in Shags, Kitchen Carpeting, Nylons and Acrilans.

	Reg. Off the Roll	SALE PRICE	Reg. Off the Roll	SALE PRICE
9'6" x 12' Green Nylon Shag, rubber back	\$ 73.80	\$ 49.75	12' x 12' Lees Red Civilized Shag	\$143.20 \$ 95.68
11' x 12' Green Outdoor Carpet	\$101.25	\$ 69.98	13'3" x 12' Pink Shag	\$139.25 \$ 74.70
12' x 12'4" Light Green Nylon Twist	\$113.60	\$ 65.00	15' x 15'8" Lees Nylon Twist, green	\$325.00 \$175.00
12'6" x 19'2" Light Green, slight defect	\$284.70	\$129.50	14' x 15' Bronze Sculptured Nylon	\$248.75 \$ 74.50
9' x 15' Taupe Nylon	\$104.25	\$ 59.70	12' x 22'6" Green Acrilan Plush	\$328.50 \$149.40
9'3" x 12' Light Green Shag	\$132.65	\$ 67.00	8'10" x 12' Dark Blue Kitchen Carpet, rubber back	\$ 62.55 \$ 39.90
12' x 15' Light Green Kitchen Carpet, 2 pieces, ea.	\$159.00	\$ 99.60	9' x 15' Brown Kodel, tip sheared	\$149.25 \$ 89.70
12' x 12'9" Red-Brown Shag	\$135.00	\$ 84.60	8' x 12' Variegated Green, rubber back	\$ 94.75 \$ 52.95
12' x 14'4" Red Kitchen Carpet, Rubber back	\$132.00	\$ 99.75	10' x 12' Candy Stripe	\$199.30 \$ 79.30
12' x 15'3" Blue, rubber back	\$183.80	\$119.90	9' x 15'7" Dark Blue Commercial	\$247.00 \$ 82.65
9' x 12' Red and Brown Shag	\$119.40	\$ 71.75	7'4" x 11'3" Green Shag	\$ 53.82 \$ 35.80
12' x 21'6" Gold Shag	\$227.60	\$169.95	6' x 12' Brown, rubber back	\$ 63.40 \$ 39.84
12' x 14'8" Charcoal Commercial	\$310.00	\$ 89.95	12' x 22'6" Candy Stripe Shag	\$238.50 \$158.40
11' x 12' Gold Kodel, tip sheared	\$159.90	\$116.60	7' x 12'2" Variegated Green, rubber back	\$ 93.00 \$ 49.95
12' x 15'3" Golden Rust Shag	\$161.65	\$119.95	15' Blue Sculptured Nylon, Approx. 30 sq. yd. Per yd.	\$ 7.95 \$ 4.98

ARMSTRONG QUAKERTONE LINOLEUM

9 and 12-ft. widths
REG. \$1.59 SQ. YD.
On Sale Until Nov. 27 at
\$1.35 sq. yd.

ARMSTRONG 9x12 LINOLEUM RUGS

REG. \$11.98
On Sale Until Nov. 27 at
\$9.98

TENAX HEAVYWEIGHT PLASTIC Runners

In Clear and Gold - 27" wide.
REG. \$1.29 lineal ft.
On Sale Until Nov. 27 at
\$1.09 lin. ft.

MERKEL BROTHERS

Open Monday and Friday Until 9 p.m.

Phone Chelsea 475-8621

Community Calendar



Annual Fair Board meeting, Dec. 7, at 8 p.m., Chelsea Fairgrounds. Vote on proposed new by-laws.

Older Adult group of the Methodist church will be entertained by "XYZ's" of St. Paul United Church of Christ Friday, Nov. 19 at St. Paul. Pot-luck dinner, 12:30 p.m. Bring own table service and dish to pass.

Lyndon Study Club, Lyndon Town hall, Nov. 18. Dessert-lunch at 12:30.

Chelsea OES Rummage Sale at Masonic Temple, Nov. 19 from 9 a.m. to 9 p.m. Nov. 20 from 9 a.m. to noon. For pick-up, call 475-1141 or 475-8913.

Saturday, Dec. 4, the VFW Auxiliary to Post 4076 is having their Christmas Bazaar and bake sale at the Town Hall beginning at 10 a.m.

Never Rest Farmers Farm Bureau Group, Friday, Nov. 19, 8 p.m. at the home of Mr. and Mrs. Roger Trolz.

Young Homemakers, Thursday, Nov. 18, 8 p.m. at Lima Community Hall. Christmas bazaar and auction. Bring a guest.

St. Barnabas Episcopal Church Women will hold their annual Christmas Bazaar Dec. 2, from 11 a.m. to 5 p.m. Hand-made baked goods, home-made candy, lots of Christmas goodies. Sandwich luncheon. We will try to have something special for you! adv24

American Legion and Auxiliary hospital equipment available by contacting Loren Keeser at 475-2766 or 475-5431.

Inquiries regarding the Chelsea blood bank may be directed to Harold Jones in the event that Mrs. Dudley Holmes is unavailable, or to Mrs. Pauline McKenna, American Red Cross in Ann Arbor, 971-5300.

Chelsea Social Service, second floor of the Municipal Building, is open each Tuesday and Thursday, afternoon from 2 p.m. to 5 p.m. to assist persons with problems, either through counseling, or referral to other agencies, when indicated. Limited financial help may be given. The office also maintains a clothing depot for new and used clothing and bedding which is given without charge. All visitors welcome. Phone 475-4581.

Senior Citizens November birthday party, Thursday, Nov. 18. Pot-luck supper at 6:30 p.m. All members with November birthdays are urged to attend. Party Committee: Mr. and Mrs. Norman Eisemann and Mrs. August Dorer.

Cub Scout Pack 415, Pack meeting Tuesday, Nov. 23, 7:30 p.m. at Chelsea High school cafeteria.

Chelsea Child Study Club's Foreign Flavors cooking school begins Monday, Jan. 17, and will meet each Monday through Feb. 21. Class fee is \$10. Proceeds will benefit the public schools. For tickets contact Mrs. Bruce Galbraith, 475-8024, or Mrs. Robert Merkel, 475-3787.

VFW Auxiliary social party Monday, Nov. 22 at the Rebekah Hall, 8 p.m. Guests welcome.

Sauerkraut Supper, Dec. 5, 5:30 to 7:30 at the high school cafeteria immediately following the choir concert. \$2 for adults. \$1.50 children. Tickets from any choir member or by calling Chelsea High school.

TOPS Club at library, Wednesday afternoon group, 12:30 p.m. For information call 426-4549. Tuesday evening group, 8 p.m. For information call 475-8952.

Drug Education Committee Studies Method of Approach

How do you teach students about drugs and drug abuse? That's the central question facing the newly formed Drug Education Committee charged with writing a drug education curriculum for all grades in the Chelsea public schools.

Since illicit drug use became a real concern some six or seven years ago, drug education in Chelsea schools has been left to the discretion of the individual classroom teachers.

Given the complexity of the problem, its continuing growth, and the fact that certain approaches to the subject "turn off" the very students educators are trying to reach, the administration and many of Chelsea's teachers, felt that some coherent approach to the problem was in order.

This fall, drug education committees were formed in each of the schools, and a "master committee" comprised of all the principals, the superintendent, and two representatives from each school was formed.

Drug education committees in the schools are discussing ideas, and attempting to formulate tentative programs which would be effective on the particular level with which they deal—things both tried and untried.

The "master committee" will evaluate the programs designed by the individual schools, and attempt to write drug education guidelines incorporating the ideas presented to it.

According to committee chairman Barbara Wenk, high school science teacher, the committee members—after three meetings—are agreed on the need for a flexible program which will allow drug information to be presented in a natural way and which will also have "a unity of approach through the entire school system."

So far, the general committee's meetings, devoted mostly to progress reports from the various school committees, have centered on methods of approach rather than on specific programmatic content.

Several of the approaches now used in the various schools at this time appear to be desirable approaches to continue.

The committee, in wishing to preserve a "natural" approach that does not give undue emphasis to drug use, now favors incorporating drug education into the existing curriculum rather than setting up special drug education classes.

"We're talking about drug education units in classes where discussions about drugs might normally occur—home and family living, social studies, sciences and so forth. It would be kind of artificial to have a two-week drug unit in a math class," Miss Wenk said.

Some possible methods not now in use are also being discussed. Seminars in which informal, loosely structured discussions would replace the classroom type presentation of information are being considered. Utilizing expert speakers—reformed addicts, speakers from Drug Help, representatives from the medical or legal sector—either in the classroom or seminar setting is another possibility.

An in-service training day for teachers—a drug education unit for those teaching drug education—has been proposed and will probably be set up, and there will probably also be an increase in library materials now available to

CHELSEA FINANCE CORP.
\$25 to \$1,000
For Any
Worthwhile Purpose

See or Call
FRANK HILL
at 475-8631

111 PARK STREET
CHELSEA, MICH.



AMONG THE FIRST area hunters to report their kill on opening day was The Chelsea Standard's own Mitchell Zink. Mitch was hunting with his father-in-law, Bill Vogel, and friend Walt Brown near his North Laké home when he shot the four pointer. Mitch was about two hours behind Bill Hitchingham, however. Bill shot a 9-point buck at 7:05 a.m. while hunting with Bill Lavine of the Ann Arbor Police Department about two miles west of town. Mrs. Roger Trolz shot her first deer ever—an eight-point buck weighing approximately 165 pounds, dressed, at 9:15 a.m. Mrs. Trolz, who has been hunting for four years, was also hunting close to her home.

DEATHS

Robert Eder Family

Robert Eder
Robert Eder, 806 Daverton Rd., Charleston, W. Va., died Nov. 16. Born Oct. 20, 1941 in Chelsea, he was the son of Leonard and Linna Walker Eder.

He graduated from Chelsea High school and Michigan State University, and worked for the U. S. Agriculture Department in Lansing, Trenton, N. J., and Charleston, W. Va.

He married Patricia Bradbury Aug. 12, 1961 in Dexter.

He was a member of Christ Church at Charleston, and was active in the Indian Guides program.

He is survived by his parents, Mr. and Mrs. Leonard Eder and one brother, Daniel Eder, all of Chelsea. One brother, Roland, preceded him in death.

Patricia Eder

Patricia M. Eder, 806 Daverton Rd., Charleston, W. Va., died Nov. 16.

Born Oct. 13, 1942 at Chelsea, she was the daughter of J. Clifford and Lois Hicks Bradbury.

She graduated from Dexter High school and Lansing Business University.

She married Robert Eder Aug. 12, 1961, in Dexter.

She taught Sunday school at Christ Church in Charleston, W. Va.

She is survived by her parents, Mr. and Mrs. J. Clifford Bradbury; two brothers, J. Clifford Bradbury, Jr., and Keith Bradbury, both of Dexter; and one sister, Mrs. Roland Eder, of Chelsea.

Gerald Eder

Gerald Eder, 806 Daverton Rd., Charleston, W. Va., died Nov. 16. He was born June 27, 1933 in Lansing, the son of Robert and Patricia Bradbury Eder. He was a third grader in the Charleston school system.

He is survived by his paternal grandparents, Mr. and Mrs. Leonard Eder of Chelsea, and his maternal grandparents, Mr. and Mrs. J. Clifford Bradbury of Dexter.

Randall Eder

Randall Eder, 806 Daverton Rd., Charleston, W. Va., died Nov. 16.

He was born Aug. 10, 1967, at Morrisville, Pa., the son of Robert and Patricia Bradbury Eder. He is survived by his paternal grandparents, Mr. and Mrs. Leonard Eder of Chelsea, and by his maternal grandparents, Mr. and Mrs. J. Clifford Bradbury of Dexter.

Private funeral services will be held Friday, Nov. 19 at 1:30 p.m. at the Staffan Funeral Home with the Rev. James Hynes of Dexter and Paul J. Gerhart of Chelsea officiating. Friends may call at the Staffan Funeral Home until noon on Friday. Memorial contributions may be made to Christ Church building fund, Charleston, W. Va.

Mrs. Robert Hyslop

Former Birmingham Resident Dies at Methodist Home

Mrs. Rosalia Hyslop, 89, died Sunday, Nov. 14 at the Chelsea United Methodist Home.

Born Oct. 25, 1882 in Cincinnati, O., she was the daughter of Fred and Mary Guntherburg. She married Robert Hyslop in January, 1953. The Hyslops came to the



BEACH ATHLETIC FIELD: Superintendent of Schools Charles Cameron (left) and Business Manager Fred Mills look over the progress made during the week on the new Beach Athletic field. The field, which will feature a baseball diamond and football field, will be graded this fall and possibly seeded. It should be ready for use early next spring.

Pair Arrested on Charge of Being Drunk, Disorderly

Chelsea police arrested James Michael Galuzka, 23, of Ann Arbor, and a juvenile from Whit-taker on charges of being drunk and disorderly following an incident at a Chelsea High school dance Saturday, Nov. 13.

Chelsea police were called to the high school by a chaplaine who reported that the men were loud and boisterous, generally hostile and unco-operative with school regulations.

The chaplaine described the men who had left the dance before Chelsea police arrived.

At approximately 10 p.m. Patrolmen Dettling and Siebert encountered the men when called to the Standard Service station. The two attendants attempting to close the station were being harassed by two men who proved to be Galuzka and the juvenile.

The two were obviously intoxicated, and the officers warned them not to drive until they were sober.

The two were finally arrested at another service station by the officers a short time later.

Galuzka pled guilty to the charge in 14th District Court Monday, Nov. 15 and will be sentenced Dec. 20. Chelsea police are petitioning for a hearing in juvenile court for the Whitaker youth.

Chelsea Home from Birmingham in August, 1968. Mr. Hyslop died Aug. 25, 1969.

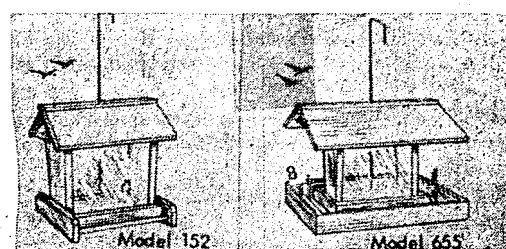
Mrs. Hyslop was a member of the Embury Methodist church of Birmingham.

She is survived by one daughter, Mrs. Rose Marie Dalian, of St. Petersburg, Fla., and two grandchildren.

Funeral services will be held today, Thursday, Nov. 18 at 10:30 a.m. at the Chelsea United Methodist Home chapel with the Rev. Richard Clemans officiating. Burial will be in Forest Lawn Cemetery in Detroit.

Funeral arrangements were by Staffan Funeral Home.

THEY'RE FOR THE BIRDS!



Add Color and Interest
To Your Backyard Winter Scene
with a

REDWOOD BIRD FEEDER

—By Heath

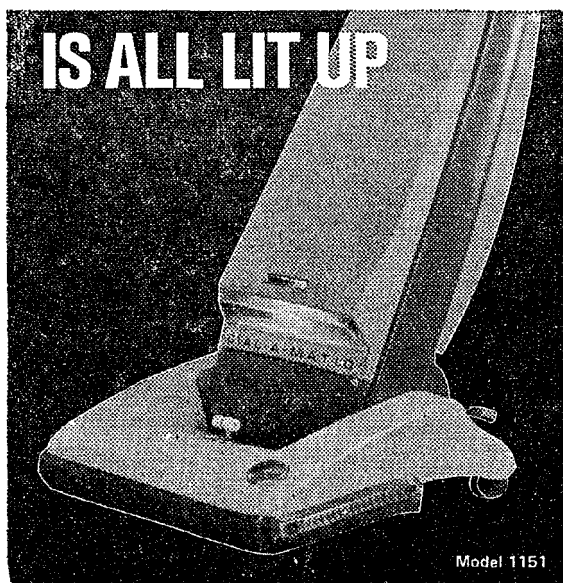
- ★ STURDY - MADE
- ★ EASY - LOADING
- ★ BIG CAPACITY

MODEL 152	\$ 3.98
MODEL 252	\$ 5.29
MODEL 655	\$ 6.59
MODEL 562	\$ 8.59
MODEL 168	\$10.95

CHELSEA LUMBER

Want to sell a car? Use a Standard Want Ad

THE NEW HOOVER DIAL-A-MATIC IS ALL LIT UP



- NEW WIDE ANGLE HEADLIGHT
- NEW AUTOMATIC BAG SIGNAL LIGHT

With All Hoover's Famous Dial-A-Matic Features! Hoover's Power Dial lets you turn this superb upright into an extra powerful canister cleaner with a simple twist...and it's ready for attachments! Regulates suction power, too...for delicate cleaning—like draperies. On the floor, famous Hoover Triple-Action really deep cleans rugs and carpets...it beats, as it sweeps, as it cleans.

Instant Rug Adjustment—adapts to any carpet from Indoor/Outdoor to Shag with a simple shift of the lever.

Wide Angle Headlight—makes cleaning easier in softly lit or shadowed areas.

Full Bag Signal Light—no worry about when to change the throw-away bag. Signal light is always in sight.

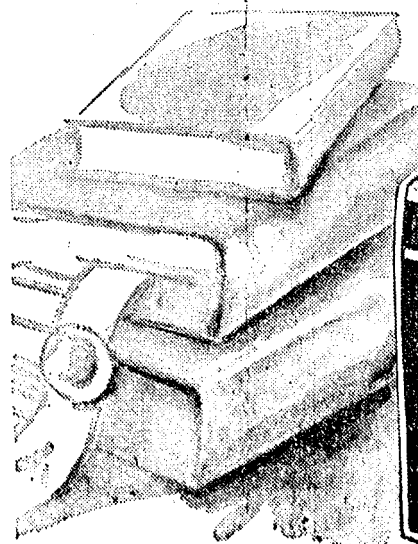
See this new
DIAL-A-MATIC TODAY

\$129⁹⁵

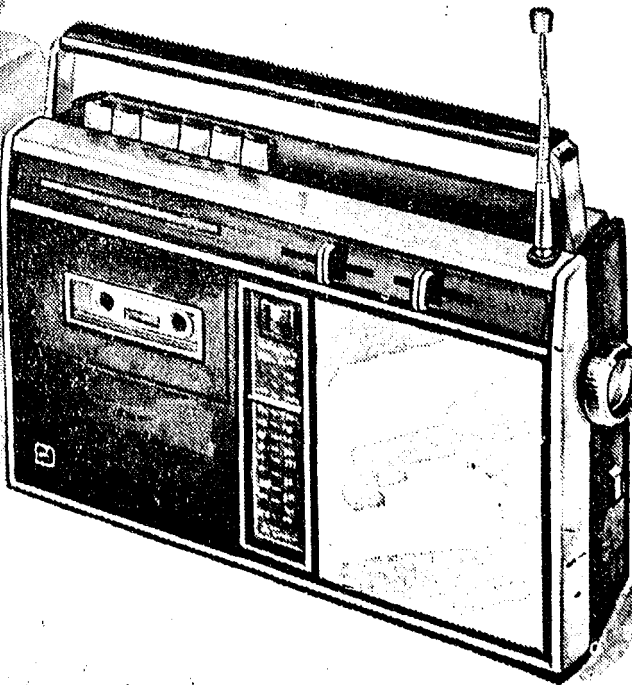
Complete
with attachments

HEYDLAUFF'S
113 North Main St. Phone 475-1221

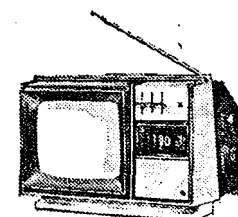
Presenting the portable do-it-all



Panasonic presents the Silverton, model RQ-236S. One portable that does it all. Plays pre-recorded cassettes. Or lets you record your own. Plays beautiful FM radio. And AM radio too. Operates on batteries. Or AC when you're at home. And even plays off your car or boat battery. (There's an optional cord for that.)



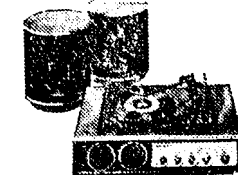
PANASONIC
just slightly ahead of our time



The Decora, model AN-409TA, is a 9" diagonal screen portable TV with built-in digital clock. Featuring 3-hour sleep-timer, Speed-O-Vision, and detachable dark-lint screen.



For those who want a multi-band portable there's the Harbor Master, model RF-1200. Featuring FM, AM, Marine, VHF, and Weather bands. And AC/battery operation for all-around use.



For home stereo entertainment check out the Sonisphere, model SE-840. A 4-speed automatic phono changer with FM/AM, VHF, and Weather bands. And AC/battery operation for all-around use.

GAMBLES

110 North Main

THE SUPERMARKET THAT'S JUST A LITTLE BIT BETTER

Stop & Shop

14901 Old U.S.-12
Corner at M-52
Chelsea



THE KNOW HOW OF INTELLIGENT MEAT BUYING IS REALLY 'KNOW WHERE'

Our customers have learned to depend on the outstanding quality of Stop & Shop meats — unfailing satisfaction with every cut they purchase. The finest quality, together with the experienced expertise of our meat cutting experts, makes an unbeatable combination!

Prices Effective Thursday, November 18, 1971,
through Sunday, November 21, 1971.

U.S.D.A. INSP. YOUNG! PLUMP! TENDER!

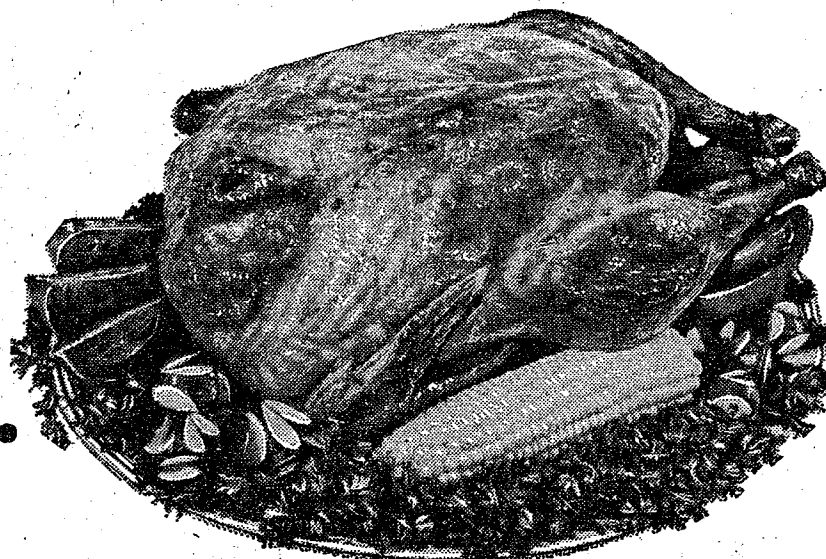
OVEN-READY TOM

TURKEYS

18 lbs.
and
up

33^c lb.

Hens - 10 to 14 lb. avg. 39c lb.



PRE-THANKSGIVING STEAK SALE!!

Highlight the Holidays with Beef!

U.S.D.A. Choice Beef
Sirloin Steaks \$1¹⁹ lb.
U.S.D.A. Choice Beef
T-Bone or Club Steaks . . \$1³⁹ lb.
U.S.D.A. Choice Beef
Porterhouse Steaks . . . \$1⁴⁹ lb.
U.S.D.A. Choice Beef, Boneless
Cube Steaks \$1⁴⁹ lb.
Fresh Quartered
Pork Loins 69^c lb.

MEADOWDALE SLICED BACON

1-Lb.
Pkg. 59^c

PESCHKE'S SKINLESS WIENERS

14-Oz.
Pkg. 59^c

Fancy Pacific Quick Frozen
Ocean Perch 89^c lb.

Fancy Pacific Quick Frozen
Red Snapper Fillets . . . 89^c lb.

Top Quality! Fully Cooked! Hickory Smoked
Hams 39^c lb.

Hams 49^c lb.

Hams 99^c lb.

HART YELLOW CLING
PEACHES 25^c

BORDEN'S NONE SUCH
MINCE MEAT
1-Lb., 12-Oz.
Jar 69^c

MARIO'S MARIONETTE MANZANILLA
STUFFED OLIVES
7-Oz.
Jar 49^c

PET RITZ FROZEN
PIE SHELLS
5-Count
Pkg. 79^c

PUFFS
FACIAL TISSUES
Asstd. Colors or White
200 Ct. Box 22^c

TERRI DISPOSABLE
PAPER TOWELS
Asstd. Colors or White
30 Ct. Cello Roll 38^c

STORE HOURS:
Monday thru Saturday
9 a.m. to 9 p.m.
Sunday, 10 a.m. to 5 p.m.

Plenty of FREE PARKING

ASSORTED FLAVORS DIET OR REGULAR

FAYGO POP
5 32-Oz.
No-Return
Bottles \$1⁰⁰

OCEAN SPRAY
CRANBERRY SAUCE
Whole or Strained
1-Lb. Can 24^c

DEL MONTE
FRUIT COCKTAIL
1-Lb., 1-Oz.
Can 25^c

Holiday Mixed Nuts . . . 1-Lb. 69^c

ICE COLD BEER & WINE

Farm Fresh Produce

Florida Red or White
SEEDLESS GRAPEFRUIT . . . 5-Lb. 58^c
U. S. No. 1 Idaho Russet
POTATOES 8-Lb. 69^c
Fresh
GREEN ONIONS . . . 2 Bunches 25^c
Fresh
RED RADISHES . . . 2 Cello 25^c
Western
BARTLETT PEARS lb. 29^c

DEL MONTE
TOMATO JUICE
1-Qt., 14-Oz.
Can 27^c

JACK-O-LANTERN
CUT YAMS
2-Lb., 8-Oz.
Can 44^c

HILLS BROS.
COFFEE \$2²²
Electric, Reg.
or Drip,
3-Lb. Can
GAINES DOG MEAL \$2⁹⁹
Special Label
25-Lb. Bag

PET RITZ
PUMPKIN or MINCE PIE
4-Oz.
Crtn. 25^c

TREESWEET FROZEN
ORANGE JUICE
5 6-Oz. 1⁰⁰
Cans

BLUE BONNET
MARGARINE
1-Lb., Crtn.
In 1/4's 29^c

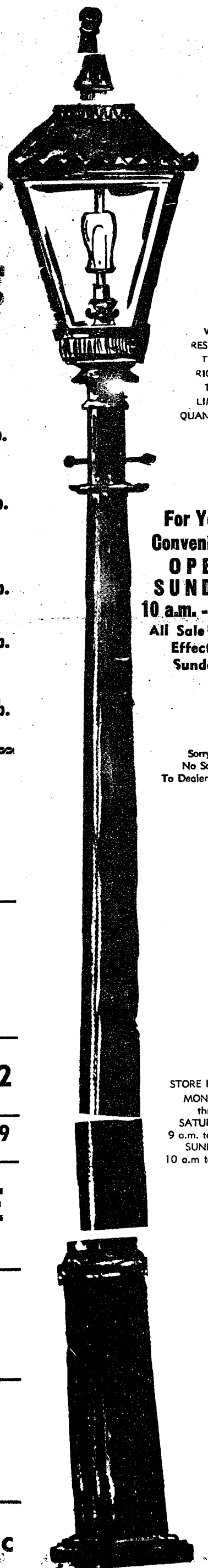
FISHER'S CHEF DELIGHT
CHEESE 2-Lb. 59^c
Loaf

WE
RESERVE
THE
RIGHT
TO
LIMIT
QUANTITIES

For Your
Convenience
**OPEN
SUNDAY**
10 a.m. - 5 p.m.
All Sale Prices
Effective
Sundays

Sorry,
No Sales
To Dealer

STORE HOURS:
MONDAY
thru
SATURDAY
9 a.m. to 9 p.m.
SUNDAY
10 a.m. to 5 p.m.



Legal Notices

MORTGAGE SALE
Default having been made in the terms and conditions of a certain mortgage made by James D. Wilmet of Ypsilanti, Washtenaw County, Michigan, Mortgagee, to the National Bank of Detroit, Association of National Bank Association of Detroit, Michigan, dated the 1st day of May, A.D. 1966, and recorded in the office of the Register of Deeds, for the County of Washtenaw and State of Michigan, on the 7th day of May, A.D. 1966, in Liber 124 of Washtenaw County Records, on page 47, which mortgage there is claimed to be, at the date of this notice, for principal and interest, the sum of SIXTY-FOUR THOUSAND, SIXTY-SIX & 95/100 DOLLARS (\$64,656.95). No suit or proceeding at law or in equity having been instituted to recover the debt secured by said mortgage or any part thereof. Now, therefore, by virtue of the power of sale contained in said mortgage and pursuant to the Statute of the State of Michigan in such case made and provided, notice is hereby given that on Thursday, the 17th day of January, A.D. 1972, at 10:00 o'clock a.m., the highest bidder at the west entrance of the Washtenaw County Building in the City of Ann Arbor, Washtenaw County, Michigan (that being the building where the Circuit Court for the County of Washtenaw is held), of the premises described in said mortgage, or so much thereof as may be necessary to pay the amount due, as aforesaid, on said mortgage, plus interest thereon at seven per cent (7%) per annum and all legal costs, charges and expenses, including the attorney's fees allowed by law, and also any sum or sums which may be paid by the lender, necessary to protect its interest in the premises, which said premises are described as follows: That certain piece of land situated in the County of Washtenaw and State of Michigan, and described as follows: Lot 18, Block 13, Subdivision of Lots 1 to 73 inclusive, excepting Lots 34 and 35, and Lots 109 and 111 inclusive of Oak Park, Pittsford Township, Washtenaw County, Michigan, according to the Plat thereof as recorded in Liber 8 of Plats, Page 6, Washtenaw County Records.

During the six (6) months immediately following the date, the property may be redeemed.

WATSON FEDERAL SAVINGS AND LOAN ASSOCIATION
Mortgagee.
Attorney for Mortgagee: Macdonald & Wilder
34269 Michigan Avenue
Wayne, Michigan 48184
Oct. 21-Jan. 18, 1972

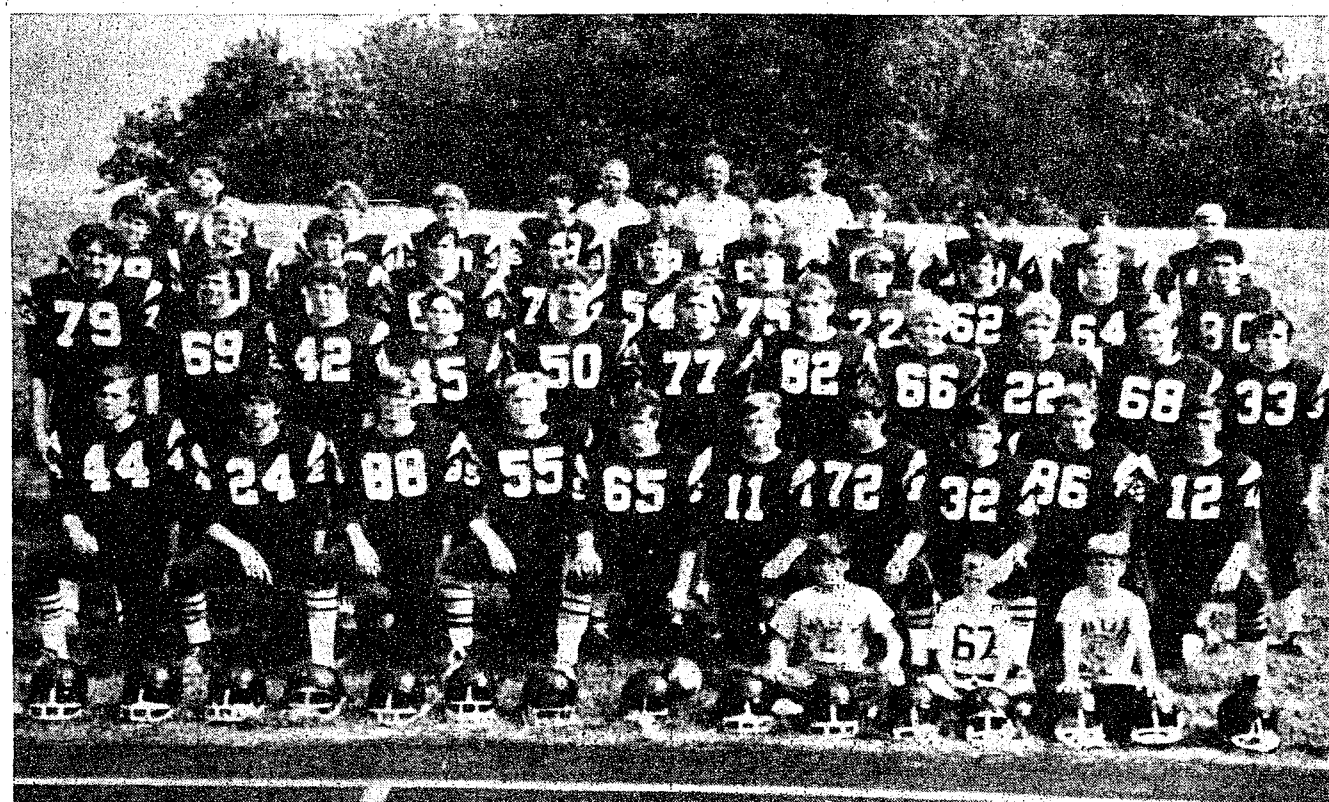
MORTGAGE SALE
Default having been made for more than thirty (30) days in the terms and conditions of a certain mortgage made by Leonard J. Bontekoe of Pontiac, Michigan, Mortgagee, to the Citizens Mortgage Corporation, dated the 10th day of February, 1969, and recorded in the office of the Register of Deeds, for the County of Washtenaw and State of Michigan, on the 7th day of February, 1969, in Liber 100 of Washtenaw County Records, on page 47, which mortgage there is claimed to be, at the date of this notice, for principal and interest, the sum of THIRTY THOUSAND FOUR HUNDRED AND SEVENTY-FIVE DOLLARS (\$30,475.00). No suit or proceeding at law or in equity having been instituted to recover the debt secured by said mortgage or any part thereof. Now, therefore, by virtue of the power of sale contained in said mortgage and pursuant to the Statute of the State of Michigan in such case made and provided, notice is hereby given that on Thursday, the 17th day of January, A.D. 1972, at 10:00 o'clock a.m., the highest bidder at the west entrance of the Washtenaw County Building in the City of Ann Arbor, Washtenaw County, Michigan (that being the building where the Circuit Court for the County of Washtenaw is held), of the premises described in said mortgage, or so much thereof as may be necessary to pay the amount due, as aforesaid, on said mortgage, plus interest thereon at eight per cent (8%) per annum and all legal costs, charges and expenses, including the attorney's fees allowed by law, and also any sum or sums which may be paid by the lender, necessary to protect its interest in the premises, which said premises are described as follows: All that certain piece of land situated in the Township of Superior, Washtenaw County, Michigan, and described as follows: Lot 1, Block 1, Subdivision of Lots 1 to 10 inclusive, excepting Lots 1, 2, 3, 4, 5, 6, 7, 8, 9, 10, 11, 12, 13, 14, 15, 16, 17, 18, 19, 20, 21, 22, 23, 24, 25, 26, 27, 28, 29, 30, 31, 32, 33, 34, 35, 36, 37, 38, 39, 40, 41, 42, 43, 44, 45, 46, 47, 48, 49, 50, 51, 52, 53, 54, 55, 56, 57, 58, 59, 60, 61, 62, 63, 64, 65, 66, 67, 68, 69, 70, 71, 72, 73, 74, 75, 76, 77, 78, 79, 80, 81, 82, 83, 84, 85, 86, 87, 88, 89, 90, 91, 92, 93, 94, 95, 96, 97, 98, 99, 100, 101, 102, 103, 104, 105, 106, 107, 108, 109, 110, 111, 112, 113, 114, 115, 116, 117, 118, 119, 120, 121, 122, 123, 124, 125, 126, 127, 128, 129, 130, 131, 132, 133, 134, 135, 136, 137, 138, 139, 140, 141, 142, 143, 144, 145, 146, 147, 148, 149, 150, 151, 152, 153, 154, 155, 156, 157, 158, 159, 160, 161, 162, 163, 164, 165, 166, 167, 168, 169, 170, 171, 172, 173, 174, 175, 176, 177, 178, 179, 180, 181, 182, 183, 184, 185, 186, 187, 188, 189, 190, 191, 192, 193, 194, 195, 196, 197, 198, 199, 200, 201, 202, 203, 204, 205, 206, 207, 208, 209, 210, 211, 212, 213, 214, 215, 216, 217, 218, 219, 220, 221, 222, 223, 224, 225, 226, 227, 228, 229, 230, 231, 232, 233, 234, 235, 236, 237, 238, 239, 240, 241, 242, 243, 244, 245, 246, 247, 248, 249, 250, 251, 252, 253, 254, 255, 256, 257, 258, 259, 260, 261, 262, 263, 264, 265, 266, 267, 268, 269, 270, 271, 272, 273, 274, 275, 276, 277, 278, 279, 280, 281, 282, 283, 284, 285, 286, 287, 288, 289, 290, 291, 292, 293, 294, 295, 296, 297, 298, 299, 300, 301, 302, 303, 304, 305, 306, 307, 308, 309, 310, 311, 312, 313, 314, 315, 316, 317, 318, 319, 320, 321, 322, 323, 324, 325, 326, 327, 328, 329, 330, 331, 332, 333, 334, 335, 336, 337, 338, 339, 340, 341, 342, 343, 344, 345, 346, 347, 348, 349, 350, 351, 352, 353, 354, 355, 356, 357, 358, 359, 360, 361, 362, 363, 364, 365, 366, 367, 368, 369, 370, 371, 372, 373, 374, 375, 376, 377, 378, 379, 380, 381, 382, 383, 384, 385, 386, 387, 388, 389, 390, 391, 392, 393, 394, 395, 396, 397, 398, 399, 400, 401, 402, 403, 404, 405, 406, 407, 408, 409, 410, 411, 412, 413, 414, 415, 416, 417, 418, 419, 420, 421, 422, 423, 424, 425, 426, 427, 428, 429, 430, 431, 432, 433, 434, 435, 436, 437, 438, 439, 440, 441, 442, 443, 444, 445, 446, 447, 448, 449, 450, 451, 452, 453, 454, 455, 456, 457, 458, 459, 460, 461, 462, 463, 464, 465, 466, 467, 468, 469, 470, 471, 472, 473, 474, 475, 476, 477, 478, 479, 480, 481, 482, 483, 484, 485, 486, 487, 488, 489, 490, 491, 492, 493, 494, 495, 496, 497, 498, 499, 500, 501, 502, 503, 504, 505, 506, 507, 508, 509, 510, 511, 512, 513, 514, 515, 516, 517, 518, 519, 520, 521, 522, 523, 524, 525, 526, 527, 528, 529, 530, 531, 532, 533, 534, 535, 536, 537, 538, 539, 540, 541, 542, 543, 544, 545, 546, 547, 548, 549, 550, 551, 552, 553, 554, 555, 556, 557, 558, 559, 560, 561, 562, 563, 564, 565, 566, 567, 568, 569, 570, 571, 572, 573, 574, 575, 576, 577, 578, 579, 580, 581, 582, 583, 584, 585, 586, 587, 588, 589, 590, 591, 592, 593, 594, 595, 596, 597, 598, 599, 600, 601, 602, 603, 604, 605, 606, 607, 608, 609, 610, 611, 612, 613, 614, 615, 616, 617, 618, 619, 620, 621, 622, 623, 624, 625, 626, 627, 628, 629, 630, 631, 632, 633, 634, 635, 636, 637, 638, 639, 640, 641, 642, 643, 644, 645, 646, 647, 648, 649, 650, 651, 652, 653, 654, 655, 656, 657, 658, 659, 660, 661, 662, 663, 664, 665, 666, 667, 668, 669, 670, 671, 672, 673, 674, 675, 676, 677, 678, 679, 680, 681, 682, 683, 684, 685, 686, 687, 688, 689, 690, 691, 692, 693, 694, 695, 696, 697, 698, 699, 700, 701, 702, 703, 704, 705, 706, 707, 708, 709, 710, 711, 712, 713, 714, 715, 716, 717, 718, 719, 720, 721, 722, 723, 724, 725, 726, 727, 728, 729, 730, 731, 732, 733, 734, 735, 736, 737, 738, 739, 740, 741, 742, 743, 744, 745, 746, 747, 748, 749, 750, 751, 752, 753, 754, 755, 756, 757, 758, 759, 760, 761, 762, 763, 764, 765, 766, 767, 768, 769, 770, 771, 772, 773, 774, 775, 776, 777, 778, 779, 780, 781, 782, 783, 784, 785, 786, 787, 788, 789, 790, 791, 792, 793, 794, 795, 796, 797, 798, 799, 800, 801, 802, 803, 804, 805, 806, 807, 808, 809, 810, 811, 812, 813, 814, 815, 816, 817, 818, 819, 820, 821, 822, 823, 824, 825, 826, 827, 828, 829, 830, 831, 832, 833, 834, 835, 836, 837, 838, 839, 840, 841, 842, 843, 844, 845, 846, 847, 848, 849, 850, 851, 852, 853, 854, 855, 856, 857, 858, 859, 860, 861, 862, 863, 864, 865, 866, 867, 868, 869, 870, 871, 872, 873, 874, 875, 876, 877, 878, 879, 880, 881, 882, 883, 884, 885, 886, 887, 888, 889, 890, 891, 892, 893, 894, 895, 896, 897, 898, 899, 900, 901, 902, 903, 904, 905, 906, 907, 908, 909, 910, 911, 912, 913, 914, 915, 916, 917, 918, 919, 920, 921, 922, 923, 924, 925, 926, 927, 928, 929, 930, 931, 932, 933, 934, 935, 936, 937, 938, 939, 940, 941, 942, 943, 944, 945, 946, 947, 948, 949, 950, 951, 952, 953, 954, 955, 956, 957, 958, 959, 960, 961, 962, 963, 964, 965, 966, 967, 968, 969, 970, 971, 972, 973, 974, 975, 976, 977, 978, 979, 980, 981, 982, 983, 984, 985, 986, 987, 988, 989, 990, 991, 992, 993, 994, 995, 996, 997, 998, 999, 1000, 1001, 1002, 1003, 1004, 1005, 1006, 1007, 1008, 1009, 1010, 1011, 1012, 1013, 1014, 1015, 1016, 1017, 1018, 1019, 1020, 1021, 1022, 1023, 1024, 1025, 1026, 1027, 1028, 1029, 1030, 1031, 1032, 1033, 1034, 1035, 1036, 1037, 1038, 1039, 1040, 1041, 1042, 1043, 1044, 1045, 1046, 1047, 1048, 1049, 1050, 1051, 1052, 1053, 1054, 1055, 1056, 1057, 1058, 1059, 1060, 1061, 1062, 1063, 1064, 1065, 1066, 1067, 1068, 1069, 1070, 1071, 1072, 1073, 1074, 1075, 1076, 1077, 1078, 1079, 1080, 1081, 1082, 1083, 1084, 1085, 1086, 1087, 1088, 1089, 1090, 1091, 1092, 1093, 1094, 1095, 1096, 1097, 1098, 1099, 1100, 1101, 1102, 1103, 1104, 1105, 1106, 1107, 1108, 1109, 1110, 1111, 1112, 1113, 1114, 1115, 1116, 1117, 1118, 1119, 1120, 1121, 1122, 1123, 1124, 1125, 1126, 1127, 1128, 1129, 1130, 1131, 1132, 1133, 1134, 1135, 1136, 1137, 1138, 1139, 1140, 1141, 1142, 1143, 1144, 1145, 1146, 1147, 1148, 1149, 1150, 1151, 1152, 1153, 1154, 1155, 1156, 1157, 1158, 1159, 1160, 1161, 1162, 1163, 1164, 1165, 1166, 1167, 1168, 1169, 1170, 1171, 1172, 1173, 1174, 1175, 1176, 1177, 1178, 1179, 1180, 1181, 1182, 1183, 1184, 1185, 1186, 1187, 1188, 1189, 1190, 1191, 1192, 1193, 1194, 1195, 1196, 1197, 1198, 1199, 1200, 1201, 1202, 1203, 1204, 1205, 1206, 1207, 1208, 1209, 1210, 1211, 1212, 1213, 1214, 1215, 1216, 1217, 1218, 1219, 1220, 1221, 1222, 1223, 1224, 1225, 1226, 1227, 1228, 1229, 1230, 1231, 1232, 1233, 1234, 1235, 1236, 1237, 1238, 1239, 1240, 1241, 1242, 1243, 1244, 1245, 1246, 1247, 1248, 1249, 1250, 1251, 1252, 1253, 1254, 1255, 1256, 1257, 1258, 1259, 1260, 1261, 1262, 1263, 1264, 1265, 1266, 1267, 1268, 1269, 1270, 1271, 1272, 1273, 1274, 1275, 1276, 1277, 1278, 1279, 1280, 1281, 1282, 1283, 1284, 1285, 1286, 1287, 1288, 1289, 1290, 1291, 1292, 1293, 1294, 1295, 1296, 1297, 1298, 1299, 1300, 1301, 1302, 1303, 1304, 1305, 1306, 1307, 1308, 1309, 1310, 1311, 1312, 1313, 1314, 1315, 1316, 1317, 1318, 1319, 1320, 1321, 1322, 1323, 1324, 1325, 1326, 1327, 1328, 1329, 1330, 1331, 1332, 1333, 1334, 1335, 1336, 1337, 1338, 1339, 1340, 1341, 1342, 1343, 1344, 1345, 1346, 1347, 1348, 1349, 1350, 1351, 1352, 1353, 1354, 1355, 1356, 1357, 1358, 1359, 1360, 1361, 1362, 1363, 1364, 1365, 1366, 1367, 1368, 1369, 1370, 1371, 1372, 1373, 1374, 1375, 1376, 1377, 1378, 1379, 1380, 1381, 1382, 1383, 1384, 1385, 1386, 1387, 1388, 1389, 1390, 1391, 1392, 1393, 1394, 1395, 1396, 1397, 1398, 1399, 1400, 1401, 1402, 1403, 1404, 1405, 1406, 1407, 1408, 1409, 1410, 1411, 1412, 1413, 1414, 1415, 1416, 1417, 1418, 1419, 1420, 1421, 1422, 1423, 1424, 1425, 1426, 1427, 1428, 1429, 1430, 1431, 1432, 1433, 1434, 1435, 1436, 1437, 1438, 1439, 1440, 1441, 1442, 1443, 1444, 1445, 1446, 1447, 1448, 1449, 1450, 1451, 1452, 1453, 1454, 1455, 1456, 1457, 1458, 1459, 1460, 1461, 1462, 1463, 1464, 1465, 1466, 1467, 1468, 1469, 1470, 1471, 1472, 1473, 1474, 1475, 1476, 1477, 1478, 1479, 1480, 1481, 1482, 1483, 1484, 1485, 1486, 1487, 1488, 1489, 1490, 1491, 1492, 1493, 1494, 1495, 1496, 1497, 1498, 1499, 1500, 1501, 1502, 1503, 1504, 1505, 1506, 1507, 1508, 1509, 1510, 1511, 1512, 1513, 1514, 1515, 1516, 1517, 1518, 1519, 1520, 1521, 1522, 1523, 1524, 1525, 1526, 1527, 1528, 1529, 1530, 1531, 1532, 1533, 1534, 1535, 1536, 1537, 1538, 1539, 1540, 1541, 1542, 1543, 1544, 1545, 1546, 1547, 1548, 1549, 1550, 1551, 1552, 1553, 1554, 1555, 1556, 1557, 1558, 1559, 1560, 1561, 1562, 1563, 1564, 1565, 1566, 1567, 1568, 1569, 1570, 1571, 1572, 1573, 1574, 1575, 1576, 1577, 1578, 1579, 1580, 1581, 1582, 1583, 1584, 1585, 1586, 1587, 1588, 1589, 1590, 1591, 1592, 1593, 1594, 1595, 1596, 1597, 1598, 1599, 1600, 1601, 1602, 1603, 1604, 1605, 1606, 1607, 1608, 1609, 1610, 1611, 1612, 1613, 1614, 1615, 1616, 1617, 1618, 1619, 1620, 1621, 1622, 1623, 1624, 1625, 1626, 1627, 1628, 1629, 1630, 1631, 1632, 1633, 1634, 1635, 1636, 1637, 1638, 1639, 1640, 1641, 1642, 1643, 1644, 1645, 1646, 1647, 1648, 1649, 1650, 1651, 1652, 1653, 1654, 1655, 1656, 1657, 1658, 1659, 1660, 1661, 1662, 1663, 1664, 1665, 1666, 1667, 1668, 1669, 1670, 1671, 1672, 1673, 1674, 1675, 1676, 1677, 1678, 1679, 1680, 1681, 1682, 1683, 1684, 1685, 1686, 1687, 1688, 1689, 1690, 1691, 1692, 1693, 1694, 1695, 1696, 1697, 1698, 1699, 1700, 1701, 1702, 1703, 1704, 1705, 1706, 1707, 1708, 1709, 1710, 1711, 1712, 1713, 1714, 1715, 1716, 1717, 1718, 1719, 1720, 1721, 1722, 1723, 1724, 1725, 1726, 1727, 1728, 1729, 1730, 1731, 1732, 1733, 1734, 1735, 1736, 1737, 1738, 1739, 1740, 1741, 1742, 1743, 1744, 1745, 1746, 1747, 1748, 1749, 1750, 1751, 1752, 1753, 1754, 1755, 1756, 1757, 1758, 1759, 1760, 1761, 1762, 1763, 1764, 1765, 1766, 1767, 1768, 1769, 1770, 1771, 1772, 1773, 1774, 1775, 1776, 1777, 1778, 1779, 1780, 1781, 1782, 1783, 1784, 1785, 1786, 1787, 1788, 1789, 1790, 1791, 1792, 1793, 1794, 1795, 1796, 1797, 1798, 1799, 1800, 1801, 1802, 1803, 1804, 1805, 1806, 1807, 1808, 1809, 1810, 1811, 1812, 1813, 1814, 1815, 1816, 1817, 1818, 1819, 1820, 1821, 1822, 1823, 1824, 1825, 1826, 1827, 1828, 1829, 1830, 1831, 1832, 1833, 1834, 1835, 1836, 1837, 1838, 1839, 1840, 1841, 1842, 1843, 1844, 1845, 1846, 1847, 1848, 1849, 1850, 1851, 1852, 1853, 1854, 1855, 1856, 1857, 1858, 1859, 1860, 1861, 1862, 1863, 1864, 1865, 1866, 1867, 1868, 1869, 1870, 1871, 1872, 1873, 1874, 1875, 1876, 1877, 1878, 1879, 1880, 1881, 1882, 1883, 1884, 1885, 1886, 1887, 1888, 1889, 1890, 1891, 1892, 1893, 1894, 1895, 1896, 1897, 1898, 1899, 1900, 1901, 1902, 1903, 1904, 1905, 1906, 1907, 1908, 1909, 1910, 1911, 1912, 1913, 1914, 1915, 1916, 1917, 1918, 1919, 1920, 1921, 1922, 1923, 1924, 1925, 1926, 1927, 1928, 1929, 1930, 1931, 1932, 1933, 1934, 1935, 1936, 1937, 1938, 1939, 1940, 1941, 1942, 1943, 1944, 1945, 1946, 1947, 1948, 1949, 1950, 1951, 1952, 1953, 1954, 1955, 1956, 1957, 1958, 1959, 1960, 1961, 1962, 1963, 1964, 1965, 1966, 1967, 1968, 1969, 1970, 1971, 1972, 1973, 1974, 1975, 1976, 1977, 1978, 1979, 1980, 1981, 1982, 1983, 1984, 1985, 1986, 1987, 1988, 1989, 1990, 1991, 1992, 1993, 1994, 1995, 1996, 1997, 1998, 1999, 2000, 2001, 2002, 2003, 2004, 2005, 2006, 2007, 2008, 2009, 2010, 2011, 2012, 2013, 2014, 2015, 2016, 2017, 2018, 2019, 2020, 2021, 2022, 2023, 2024, 2025, 2026, 2027, 2028, 2029, 2030, 2031, 2032, 2033, 2034, 2035, 2036, 2037, 2038, 2039,

CONGRATULATIONS '71 BULLDOGS

**Southeastern
Conference
Champions**



**No. 1 Ranked
Class B Team
in Michigan**



BULLDOG VARSITY: Members of the Chelsea High school varsity football team this year are (left to right) front row: Jeff Hughes, Mark Collins, Dave Lukasiak, Bob Wojcicki, Tom McKernan, Wayne Welton, Randy Seitz, Joe Aspiranti, Steve Knickerbocker, and Ralph Stewart. Second row: Jeff Schmidt, John Porter, Tom Lixey, Tom Hubert, Keith Pfeifle, Ed Keongeter, Dennis Landwehr, Larry Hopkins, Randy Brier, Dan Schuelke, and Marty Cashdollar. Third row: Dave Tucker, Jeff Daniels, John Mann,

Steve Bergman, Mark Grambau, Randy Young, Bill Harrison, Larry Jones, Dan Houle, Dan Schulze, and Paul Miller. Fourth row: Steve Worden, Keith Hume, Tim Lancaster, Jeff VanRiper, Dan Bertke, Mike Merkel, Don Conklin, Bruce Guster, Harold Allen and Bob Elliott. At the back are coaches Richard Bareis, Phil Bareis and Jim Tallman. Seated in front are team managers Steve Pennington, Mike Bareis and John Daniels. Missing from the picture are Ron Adams and Ron Sweeny.

1971 RECORD

9 BIG VICTORIES

STOCKBRIDGE	30- 6
DEXTER	16- 7
SALINE	14- 6
LINCOLN	31-24
NOVI	36-28
DUNDEE	30- 3
SOUTH LYON	39- 0
MILAN	31- 0
JACKSON N.W.	21- 7

TOTAL POINTS:

CHELSEA	248
OPPOSITION	81

To the Chelsea High School football team of 1971, we salute you and your accomplishments! In completing an undefeated season, winning the Southeastern Conference title and being ranked the No. 1 Class B team in the entire state, you have brought honors to yourselves and to your home community. The fine sportsmanship and aggressive determination you have displayed have made us proud of you and your efforts. We are pleased to see you have learned so early in life the rewards of continued, determined effort and co-operation in a team effort. These memories will stay with you and us for the rest of our lives. Thank you.

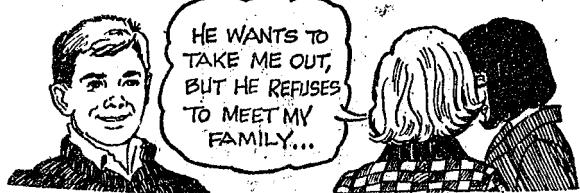
Chelsea Lumber Co.
Strieter's Men's Wear
Schneider's Grocery
Dancer's Dept. Store
Gambles
Chelsea Greenhouse
Hilltop, Inc.
Merkel Furniture & Carpet
Chelsea Finance Corp.
A. D. Mayer Agency
Wallace Wood Insurance
Chelsea Drug
Cavanaugh Lake Store

Heller Electric & Insulation
Foster's Men's Wear
Kusterer's Food Market
Chelsea Baptist Church
Dairy Queen Brazier
Sam's Barber Shop
Stop & Shop Supermarket
Thompson's Pizzeria
Chelsea Associated Builders
Parish's Chelsea Cleaners
Schumm's
Budget-Wise Store
Jack Warren & Son, Barbers

Winans Optical
Western Auto
Gateway Sports Centre
Winans Jewelry
Chelsea Hardware
Rick's Market
Jim's Union 76 Service
Fred's Standard Service
Foor Mobil Service
Mcabon's TV, Furn. & Appl.
Chelsea Restaurant
Smith's AAA Service
Murphy's Barber Shop

Heydlauff's
Jiffy Market
Palmer Ford
Spaulding Chevrolet
Sprague Buick - Olds
Harper Pontiac
Village Motor Sales, Inc.
Frisinger Realtors
Thornton Realtors
Kern Real Estate
The Chelsea Standard
R. D. Miller Real Estate
Doug's Ashland Service

For And About Teenagers



THE WEEK'S LETTER:

I've got a big problem. There's this guy I like and he likes me. We've known him for almost 3 years. Not once have we had a date. Not that he hasn't asked me — he's been asking since I was 15, and now I'm 17.

Our problem is he thinks my family doesn't like him. He can't be sure though, because he hasn't met all of my family. He wants to meet them, but he is sure they will not like him.

I've been to his home with my girlfriend, who is also his cousin. I've met his entire family, and I get along with them very well.

If we should meet in public and I am alone, he'll come over and talk to me, but if I'm with my family, he pretends he doesn't know me.

He wants to take me out, but refuses to meet my family. What can I do?

OUR REPLY: Unless the guy has some reason to believe that your family doesn't like him, he is being foolish about the whole thing. Put it to him straight: if he wants to take you out, he must meet the family. What about the family? Have you asked them

how they feel about the young man? Ask them; you will then have the truth to put to him at ease or, you may learn that they have some reason for not liking him. In any event, at 17 you still need guidance from your parents. Let them know who you are dating.

If you have a teen-age problem you want to have discussed or an observation to make, address your letter to "For and About Teen-Agers," Community and Suburban Press Service, in care of this newspaper.

4-H Clubs

GARFIELD GANG

This week in 4-H we changed jobs around. The president is Kathy Villeneuve and she is real happy about it. We sewed our gaucho pants or knickers. Next week we're putting in our elastic. Our song leader helped us sing a song. Julie Botsford brought treats.

Kelli Borton, reporter.

Chances of skidding in an auto are five to 10 times greater when driving on wet roads.

The Chelsea Standard



Pre-Christmas Sale

RYTEX ANTIQUE VELLUM:

Just in time for Christmas buying... luxurious vellum paper with the subtle laid-mark pattern. Paper colors in soft white or pale blue. Name and address, or monogram, printed in blue, dark grey or raspberry red. Handsomely gift boxed.

Man-sized Monarch:
100 sheets & 100 envelopes

or Princess-size:
150 sheets & 100 envelopes
or Gracious Semi-notes:
100 notes & 100 envelopes

EMBASSY INFORMALS Always correct for invitations, brief lines, thank-you notes. Raised printing in jet black ink on white, invitation-weight notes.

100 Informals & envelopes \$5.00
(double quantity only \$2.50 more)

\$4.95

(a \$9.90 value)

MAIL ORDER COUPON
THE CHELSEA STANDARD
CHELSEA, MICH. 48118

ANTIQUÉ VELLUM: _____ boxes at \$4.95 (check choices below)
INCLUDE BONUS: ☐ (check) 50 extra, unprinted sheets at \$1.00 with order.

Princess Size ☐ White (3500) ☐ Blue (3550)
Monarch Size ☐ White (3600) ☐ Blue (3660)
Semi-Note ☐ White (N3500) ☐ Blue (N3550)
Ink Color ☐ Blue ☐ Grey ☐ Red
Imprint Style ☐ MC ☐ AL ☐ Monogram on sheets & address on envs.
(this is \$1.00 extra)

Imprint Name _____
(or monogram) _____

Street _____
City, State, Zip _____

EMBASSY INFORMALS: _____ boxes (check choice below)
☐ Regular Qty. at \$5.00 (800SR)
☐ DOUBLE QTY. at \$7.50 (8000SR)

Imprint Name _____

ORDERED BY: _____
Street _____ Apt. _____
City, State, Zip _____ Phone _____

Account No. _____
☐ Charge ☐ Check or M.O. enclosed \$ _____
Sorry no C.O.D.'s. (Please include Sales Tax.)

Schumm's FINE DINING Cocktails

CHELSEA IS
NUMBER 1
21 TO 7



NO DOUBT ABOUT IT: Chelsea IS Number One. Chelsea fans knew it last Saturday morning after Chelsea's Bulldogs defeated undefeated Jackson Northwest, 21 to 7, Friday night. In order to let everyone know about it, some exuberant young fans rearranged the sign on Schumm's Restaurant. Watching Rob Stoffer (right) put that seven in place are (left to right) Jenny, Beth, and Mary Clark.

Thought For Food

THANKSGIVING SPECIAL

EASY, DELICIOUS RECIPES

NUTTED PEAR SALAD: Place drained canned pear halves, cut side down on beds of lettuce. Stud with blanched sliced almonds; decorate with sliced maraschino cherries. Serve with creamy dressing.

SPICED APPLE BOUILLON: Take 1 can (10½ ounces) condensed beef broth and ½ cup can of apple juice and mix together. Add a dash of ground cinnamon or nutmeg, if desired. Pour over ice cubes, or heat and serve hot. Makes 2 to 3 servings.

GOLDEN MUSHROOM TURKEY GRAVEY: Remove turkey from the pan, pour off and measure 2 to 4 tablespoons drippings. Pour 1 can (10½ ounces) condensed golden mushroom soup into the pan. Stir to loosen browned bits. Blend in ¼ to 1.3 cup water and the 2 to 4 tablespoons turkey drippings for the desired thickness desired. Heat; stir often. Makes 1½ cups gravy.

PEAS CHINOISE: Cook and drain 2 packages (10 ounces each) frozen peas. Add ½ cup mandarin water chestnuts, drained and ½ teaspoon mace or nutmeg. Heat; stir now and then. Serves 6.

PORCUPINE CELERY: Feather the edges of celery stalks early in the day and place in the refrigerator in ice water until ready to serve.

"I REMEMBER"

BY THE OLD TIMER

From Mrs. Frances Fenton, Columbia, Mo.: I remember my Grandfather for the many things that he did.

Grandfather kept bees, and always had the best honey on the table, both strained and in the comb. It was so exciting to see him take the honey without getting a sting.

Every summer, Grandfather would kill rattlesnakes. He'd skin them and save the rattlers. We were always fascinated to see them, and to hear the story of where and how he killed them.

During the summer, he would make up a batch of dough bait. He would then travel the six miles to the Missouri River in a buggy with "Old Pat". There he would set out his fishing line. In a few days he would go back and bring in his catch. The biggest fish I remember seeing weighed 24 pounds.

Last, but not least, I remember Grandfather cutting his own hair. He would sit on an old stump in the front yard, and with a household scissors, cut his white, stubby hair very short and even. This is the way I remember my "Grandpa Smith".

Bald tires, those with no tread at all in some spots, are 44 times more likely to have flats, tests show.

SPECIAL SCHOOL ELECTION

NOTICE IS HEREBY GIVEN To the Qualified Electors of
CHELSEA SCHOOL DISTRICT

Counties of Washtenaw and Jackson, Michigan
State of Michigan

**That A Special Election Will Be Held on
TUESDAY, NOV. 30, 1971**

The Polls for the said Election will be open from 7:00 o'clock a.m., and remaining open until 8:00 o'clock p.m., of the same Election day.

The place (or places) of ELECTION are indicated below:

SYLVAN TOWNSHIP HALL

The following QUESTION will be voted upon:

MENTAL RETARDATION SERVICE CENTER

"Shall the Washtenaw Intermediate School District, State of Michigan, borrow the sum of not to exceed \$2,700,000 and issue its bonds therefore, for the purpose of defraying all or any part of the costs of purchasing, erecting, completing, remodeling, improving, furnishing, refurbishing, equipping or reequipping buildings to house the program for the trainable mentally handicapped and other related facilities; acquiring, preparing, developing or improving sites, or any part thereof or additions thereto, for buildings and other facilities to house programs for the trainable mentally handicapped; refunding all or any part of existing bonded indebtedness; or the accomplishment of any combination of the foregoing purposes?"

This Notice is given by order of the Board of Education of Chelsea School District, Michigan.

DATED: October 18, 1971.

Mrs. Carolyn Smith
Secretary, Board of Education

Letters to the Editor

Dear Editor:

As a teacher of special education for the mentally retarded, I would like to discuss the bonding issue on Nov. 30 for the construction of the Mental Retardation Service Center for Washtenaw county.

Due to the advancement of medical science our infant mortality rate is decreasing, and the retarded population is affected accordingly. There is a marked increase in retarded children. With the present facilities, the county is unable to serve these children. If it is constructed, the proposed center would serve children from birth through age 25 and advise parents of retarded children who need help in caring for their child at home.

"All men are created equal." The dignity and worthiness of an individual stands above difference in endowment. Therefore, our goal for a retarded child is to develop his independence to the fullest extent. Since each individual is uniquely different, each child will require a well planned educational, physical, and psychological developmental program. This involves the co-operation of diagnosticians, psychologists, physicians, social workers, public health nurses, vocational therapists, physical therapists, teachers and many other professionals and non-professionals. In order to carry out the program successfully, we must have facilities that will give the maximum performance and bring about the best possible result. The center is urgently needed and I hope all property owners will carefully consider the bonding issue on the Nov. 30 ballot and vote accordingly.

Mrs. Joan Liang
Beach school.

Dear Editor,

As a special education teacher, I am very interested in the proposed Mental Retardation Services Center. The need for it is extreme, and the benefit to the community is immense. Every child should be able to realize the full extent of his capabilities. We are now wasting much human potential. These children are a resource of the community which is not being tapped. I certainly hope every voter in Chelsea will vote yes on Nov. 30. The meager cost to the taxpayer is overwhelmed by the benefit done to the many children in our county.

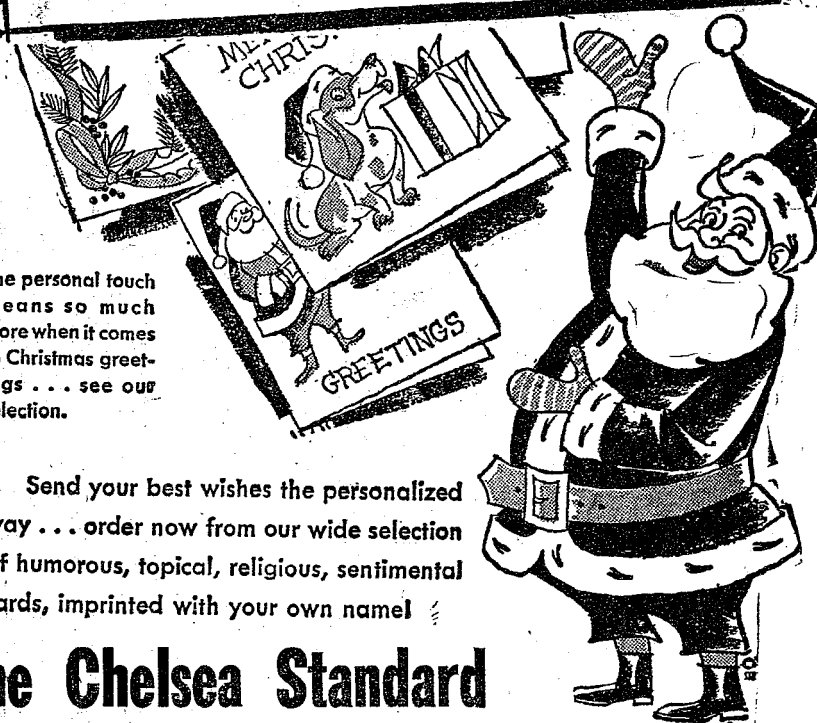
Nancy Oswald
Special Education teacher
Chelsea High School.

Highway Dept. Taking Bids on Giant Interchange

Lansing—Bids on the largest single project in the history of the Department of State Highways were to be taken Nov. 17 in Lansing, the State Highway Commission has announced. The project, estimated at \$17.4 million in two separate contracts, largest in the state, spreading over 633 acres in Novi village and Farmington township. The two interchange contracts are among 13, estimated at a total of \$26.5 million, on which bids will be taken.

Now Is the Time To Order Your Christmas Cards

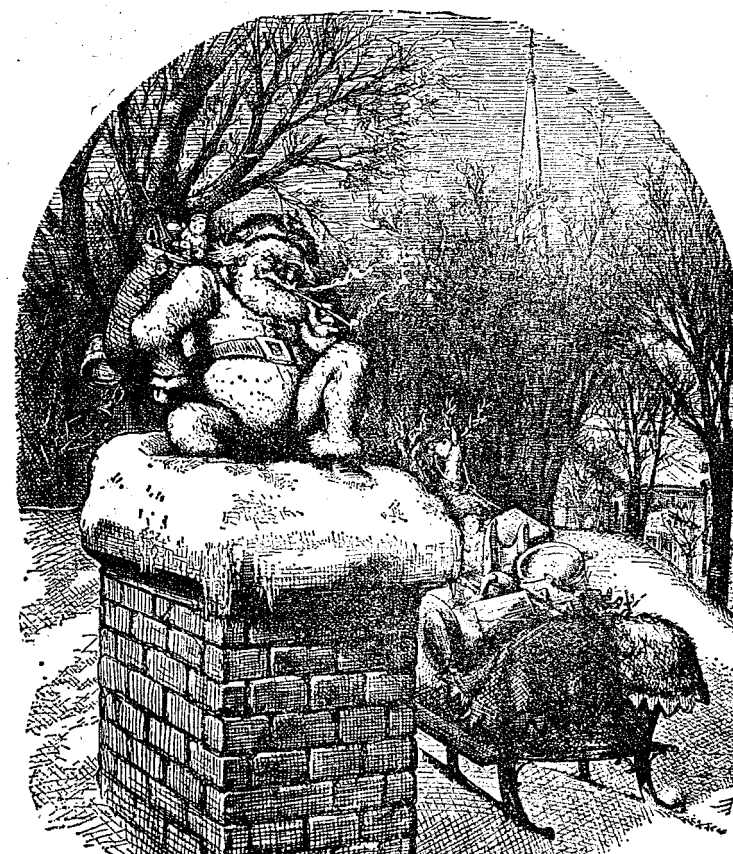
Personalized GREETING CARDS



The personal touch means so much more when it comes to Christmas greetings... see our selection.

Send your best wishes the personalized way... order now from our wide selection of humorous, topical, religious, sentimental cards, imprinted with your own name!

The Chelsea Standard



**you can earn 4½%
daily interest
on the "FED'S" 1972
Christmas Club**

Christmas Club is the answer to after-Christmas bills hangover. You save from 50 cents to \$20 bi-weekly...by mail if you like...receive from \$12.50 to \$500 November 1972, PLUS 4-1/2% daily interest. You have the money to pay as you shop. No after-Christmas bills to spoil the memories of the happy holiday season. Get the edge at the "FED".

4½% daily interest from day of deposits to November 3, 1972

DEPOSIT	RECEIVE NOVEMBER, 1972
\$.50 every 2 weeks	\$ 12.50 plus Daily Interest *
1.00 every 2 weeks	25.00 plus Daily Interest *
2.00 every 2 weeks	50.00 plus Daily Interest *
4.00 every 2 weeks	100.00 plus Daily Interest *
6.00 every 2 weeks	150.00 plus Daily Interest *
10.00 every 2 weeks	250.00 plus Daily Interest *
20.00 every 2 weeks	500.00 plus Daily Interest *

the savings specialists
Liberty at Division West Stadium at Pauline,
Huron Parkway at Platt, Plymouth at Nivon.

ANN ARBOR FEDERAL SAVINGS

Member: Federal Home Loan Bank System • Federal Savings and Loan Insurance Corporation

BOWLING NEWS

Chelsea Nite Owl League

Standings as of Nov. 15

	W	L
p & Pantry	29 1/2	10 1/2
le's Heating	26	14
er's Men's Wear	21	19
maugh Lake Store	21	19
n No. 8	20	20
s Standard	20	20
sea Finance	18 1/2	21 1/2
h's AAA	18	22
& Son Barbers	17	23
er Electric	17	23
ella Mobile Feeds	17	23
l's Arco Sparks	15	25

10 series: G. Packard, 522; G. ar, 548; W. Bonne, 547; J. ges, 540; J. Elliott, 534; R. ers, 536; D. Bauer, 519; J. ldyke, 518; J. Eder, 515; L. u, 507; D. Bush, 506; J. Gak- 506; J. Turner, 506; M. Pack- 506.

10 games: W. Bohne, 236; J. en, 228; G. Packard, 216.

Old Timers Bowling League

Standings as of Nov. 13

	W	L
& Otto Standard	28	12
ortsman's Tavern	25 1/2	14 1/2
zel Service	25	15
s Beens	23 1/2	16 1/2
an Screw Products	21 1/2	18 1/2
son Realtors	21	19
verleaf Lanes	20 1/2	19 1/2
onial Lanes	19	21
ford Security Ser.	19	21
am No. 14	19 1/2	20 1/2
am No. 16	19	21
cky 13	18 1/2	21 1/2
rtman Ins.	17 1/2	22 1/2
in & Goetz	15 1/2	24 1/2
ter Bowl 'n' Bar	15	25
ikel Furniture	12	27

Team won three: Hotel Serv. Team No. 14 and Team No. 16.

High team game and series: ortsman's Tavern, 859, 2,423.

High ind. game: G. Rohde, 208.

High ind. series: W. Fishlock, 521; P. Johnson, 512; Hotel, 512; W. Wysocki, 510; Johnson, 510; A. Frank, 509; Butzin, 502; B. Drake, 501.

Rolling Pin League

Standings as of Nov. 16

	W	L
g Beaters	30	14
okie Kutters	28 1/2	15 1/2
ooners	28	16
tchen Kapers	26	18
pper Uppers	24	20
inders	22	22
ly Mops	21 1/2	22 1/2
sh Rags	20 1/2	23 1/2
xers	17 1/2	26 1/2
ts Cups	17	27
ooms	14	30

500 and over series: J. Rabbitt, 9; L. Orlovski, 548.

400 and over series: P. Harok, 9; N. Machlanski, 400; P. Bor- 9; 472; S. Parker, 428; K. Del- 470; J. Edick, 480; G. Weiss, 407; J. Lewis, 480; G. Wlaess, 40; G. Brier, 402; A. Schneider, 2.

340 and over games: R. Foster, 18; P. Harok, 148, 156; R. Cook, 18; N. Machlanski, 147; P. Bor- 148, 176, 149; S. Parker, 16, 141; K. Del Prete, 149, 167, 14; J. Edick, 180, 171; R. Wil- 151, 159; G. Klink, 145; Wlaess, 163, 147; J. Rabbitt, 4, 210, 195; G. Brier, 140; E. cynolds, 168; A. Schneider, 165; Patterson, 143, 140; L. Orlov- 1, 164, 181, 208.

Splits converted: P. Patterson, 7; S. Hughes, 3, 10; E. Beck, 10; J. Edick, 5, 8, 10; D. Dir- 2, 5, 6, 10; J. Johnson, 3; R. Foster, 4, 7; P. Harok, 7, 10; J. Pax, 2, 7.

Junior House League

Standings as of Nov. 11

	W	L
Wolverine No. 1	21	21
The Pub	49	23
Bobs Beefers	48	29
J & S Tool	40	37
Smith's AAA Service	37 1/2	39 1/2
Boyer Automotive	37	40
Chelsea Lanes	36	41
Gambles	35	42
Jiffy Mix	33	44
No. Amer. Rockwell	32	44
3-D Sales & Service	32	45
Wolverine No. 2	25 1/2	51 1/2

200 games: K. Larson, 213, 214; R. Prater, 204; P. Dickinson, 200; A. Fleischmann, 204; P. Boham, 212; J. Toma, 259, 204; J. Led- 212, 205; J. Myning, 210; W. Beeman, 228; H. Kunzelman, 206, 210; C. Keongeter, 215, 225; A. Peterson, 201; D. Scott, 223; S. Hopkins, 204; L. Salyer, 217; H. Fahrner, 204; F. Hoffman, 218; R. Erskine, 209, 256; T. Steele, 201.

500 series: R. Kyte, 506; S. Johnson, 535; A. Sannes, 517; K. Larson, 574; R. Prater, 570; F. Dickinson, 513; A. Fleischmann, 534; P. Boham, 506; R. Ringe, 514; H. Pennington, 526; B. Smith, 505; S. Policht, 507; J. Myning, 559; T. Tuttle, 536; H. Kunzelman, 578; J. Hughes, 510; A. Fletcher, 521; W. Beeman, 543; A. Peterson, 569; D. Scott, 570; S. Hopkins, 535; J. Harok, 506; L. Salyer, 578; N. Fahrner, 505; F. Hoffman, 570; D. Walton, 509; E. Greenleaf, 521; T. Steele, 558.

600 series: J. Toma, 651; C. Keongeter, 629; R. Erskine, 635.

Guys and Gals Mixed League

Standings as of Nov. 15

	W	L
Pub No. 2	21	15
Chelsea Lanes	20	16
Seitz Tavern	20	16
Grass Lake	20	16
The Old Couples	18	18
Pleasant Lake Resort	18	18
Chelsea Standard	15	21
Team No. 1	15	21
Hay Haulers	15	21
Norris Electric	14	22
Lawwood	14	22
Pub No. 1	26	10

Team high game: Norris Elec- 842.

Team high series: Grass Lake, 2,414.

Women's high game: N. Collins, 181.

Women's high series: N. Collins, 492.

Women's 450 or over games: N. Collins, 151, 181, 160; S. Moore, 153; P. Elliott, 167, 170; C. Timmerman, 150; J. Schude, 157.

Women's 450 or over series: P. Elliott, 474; N. Collins, 492.

Men's high game: J. Elliott, 243.

Men's high series: E. Green- 583.

Men's 175 or over games: J. Norris, 189; D. Buku, 192; J. Col- 119, 176; E. Greenleaf, 218, 176, 189; J. Elliott, 243; T. Steele, 222; D. Smith, 181, 209.

Men's 500 or over series: T. Steele, 541; D. Smith, 552; J. El- 1107, 537; E. Greenleaf, 583.

Leisure Time League

Standings as of Nov. 16

	W	L
Misfits	25 1/2	10 1/2
Plus Three	21	5
Alley Cats	19	17
The Mums	16	20
The Nags	13 1/2	22 1/2
Rug Rats	13	23

Over 440 games: D. Thompson, 154, 168; P. McGibney, 169; C. Snyder, 140; V. Wheaton, 154; R. Williams, 142; C. Short, 160; E. Williams, 149, 167.

400 series: D. Thompson, 455; E. Williams, 452.

Chelsea Lanes Mixed

Standings as of Nov. 12

	W	L
Meabon's	49	21
Morgan & Turner	41	29
A. A. Centerless	41	29
Marsh & Eder	39	31
Fitzsimmons Exe.	39	31
Barkley & Gephart	37	33
Bollinger Sanitation	34	36
The Pub	32	38
Chelsea Lanes	31	39
Jarvis & Coltra	31	39
Heim & Arrington	25	45
Sable's Collision	21	49

Women's 150 games: H. Mor- 215; F. Gephart, 188, 166, 156; B. Smith, 165, 153; K. Gephart, 160; L. Gilmore, 157; A. Turner, 197; D. Cozzens, 162; B. Scott, 150; J. Longworth, 150.

Women's 450 series: F. Gephart, 510; B. Smith, 465; H. Morgan, 462.

Men's 175 games: A. Sannes, 223, 191; J. Goltz, 213; B. Smith, 208; D. Eder, 203, 187; L. Keizer, 200; R. Morgan, 183; G. Doyle, 189; F. Barkley, 181; J. Turner, 179; R. Bauer, 176.

Men's 475 series: D. Eder, 561; A. Sannes, 516; J. Goltz, 514; L. Keizer, 511; B. Smith, 487; J. Turner, 492; R. Bauer, 490; R. Morgan, 480; F. Barkley, 479; F. Blackwell, 477.

Senior House League

Standings as of Nov. 15

	W	L
Chelsea Cleaners	26	14
Bogar Builders	25	15
Sylvan Center	24	16
Sam's Barber Shop	22 1/2	17 1/2
Pub Bar	22	18
Spaulding Chevrolet	21 1/2	18 1/2
Chelsea Grinding	21	19
Schneiders Grocery	18	22
Dana No. 1	16	24
Seitz's Tavern	15	25
Dana No. 2	14	26
Murphy's Barber Shop	11	25

600 series: L. Hess, 635; A. Fletcher, 620.

500 series: S. Policht, 555; D. Coppernoll, 533; A. Clemes, 515; H. Burnett, 522; W. Griffith, 527; D. Hatley, 525; W. Hartman, 516; T. Stegle, 507; S. Hopkins, 546; G. Padgham, 508; M. Sweet, 550; D. Murphy, 594; J. Harok, 585; J. Collins, 548; L. Salyer, 525; N. Fahrner, 581.

200 games: J. Harok, 223, 224; J. Collins, 205; N. Fahrner, 222; D. Kern, 209; M. Sweet, 208; D. Murphy, 204, 214; W. Hartman, 234; S. Hopkins, 217; A. Fletcher, 202, 221; W. Griffith, 210; A. Clemes, 200; S. Policht, 201; L. Hess, 212, 225.

Chelsea Women's Bowling Club

Standings as of Nov. 10

	W	L
Chelsea Milling	30 1/2	9 1/2
Parish's Cleaners	30	10
Washtenaw Eng. Co.	25	15
Jiffy Market	25	15
Chelsea Lanes	23 1/2	16 1/2
Jiffy Mixes	21	19
Wolverine Bar	19	21
Schumm's	18	22
Community Serv. Press	15	25
Norris Electric	12	28
Schneider's Grocery	11	29
N. American Rockwell	10	30

450 series or over: R. Hummel, 611; P. Shoemaker, 499; M. A. Eder, 486; P. Poertner, 484; H. Morgan, 483; B. Fritz, 476; H. Bradbury, 470; L. Orlovski, 469; N. Kern, 468; R. Lutovsky, 467; A. Sindlinger, 462; M. E. Sut- 450.

150 games or over: R. Hummel, 165, 180, 166; P. Shoemaker, 167, 151, 181; M. A. Eder, 193, 176; P. Poertner, 188, 170; H. Morgan, 167, 186; B. Fritz, 169, 167; L. Bradbury, 151, 162, 157; L. Orlovski, 157, 156, 156; N. Kern, 177, 150; R. Lutovsky, 157, 195; A. Sindlinger, 157, 159; M. E. Sutter, 167, 152; T. Steinaway, 159, 151; B. Larson, 168; A. Fahr- 169, 169; D. Verwey, 161; H. Ringe, 167; A. Alexander, 167; A. Turner, 156; D. Alber, 160; P. Wurster, 159, 151; A. Knicker- 166, 156; M. Kozminski, 153, 168; D. Toon, 154; G. Penhalle- 162; S. Klink, 174; N. Popo- 158; D. Fouty, 161.

Tri-City Mixed League

Standings as of Nov. 12

	W	L
Foor Mobil	30	14
Wolverine Tall & Small	29	15
Trail Blazers	27	17
Chelsea Cleaners	24	20
Jiffy Mixes	24	20
Jiffy Market	22	22
3-D Sales & Service	21	23
Sprague Buick & Olds	21	23
Smith's Service	21	23
4.W's	16	28
Heydlauff's Appliances	15	29
Stiver's	14	30

500 series, men: B. Cruse, 582; A. Fouty, 575; C. Miller, 583; G. Miller, 506; H. Kunzelman, 527; A. Sannes, 628; J. Stoffer, 510; T. Wisniewski, 595; R. V. Worden, 582.

200 games, men: B. Cruse, 225; A. Fouty, 244; C. Miller, 212; A. Sannes, 202, 230; T. Wisniewski, 225; R. V. Worden, 215.

450 series, women: D. Fouty, 468; B. Parish, 476; B. Wisniewski, 466.

150 games, women: M. Ash- 166, 176; K. Chapman, 166; B. Pike, 169; D. Fouty, 194; D. Fou- 154, 150; R. Harok, 159; B. Parish, 158; M. Reagle, 156; C. Stoffer, 158; E. Tindall, 171; B. Wisniewski, 151, 195.

Telephone Your Club News To GR 5-3581.

SPORTS CORNER

THE EX-UTAH ACE IS PLAYING IN HIS 12TH SEASON. HE'S BEEN AN ALL-PRO IN MOST OF THEM. HE HITS WITH THE AUTHORITY OF A MAN 150 POUNDS HEAVIER...

Hi Point Mixed League

Standings as of Nov. 9

	W	L
Alley Katz	229	167
Four Squares	225	171
Flat Tires	212	184
Dreadnaughts	212	184
Station WVPP	211	185
Knock Outs	210	186
Ding A Lings	207	189
River Rats	186	210
Holy Terrors	186	210
Question Marks	183	213
Hi Steppers	160	236
Easy Riders	155	241

Men, over 450 series: L. Kessler, 524; D. Crum, 522; H. Schultz, 514; H. Morton, 516; M. Purdy, 487; O. Inbody, 487.

Men, over 160 games: M. Purdy, 196; O. Inbody, 179; D. Crum, 184, 182; H. Morton, 187, 173; H. Schultz, 162, 167, 185; L. Kessler, 202, 180; K. Lofquist, 164.

Women, over 425 series: G. De- 470; C. Teachworth, 484; S. Walton, 431; M. Paul, 469; P. Harok, 467.

Women, over 150 games: J. Fletcher, 163; M. Morton, 159; M. Paul, 158, 168; P. Harok, 169, 154; P. Guenther, 159; S. Walton, 159; C. Teachworth, 151, 168; G. DeSmith, 193; B. McNutt, 158.

Charlie Brown and Snoopy's Friends Peanut League

Standings as of Nov. 13

	W	L
Snoopy Stars	24	3
Pin Crackers	19	8
Harlem Globetrotters	18	9
Super Stars	13	14
Meat Balls	12	15
Flintstones	9	18
Strikers	8	19
French Fries	7	20

Series over 100: M. Alexander, 123; C. Fahrner, 115; W. Rosen- 113; M. Umstead, 123; S. Wilson, 155; D. Thompson, 100; J. Atkinson, 145; D. Seyfried, 175; D. Eissele, 185; M. Steinaway, 102; D. Waldyke, 200.

Series over 100: C. Ford, 421; B. Freeman, 187; C. Umstead, 177; B. Ostrander, 180; J. Boyer, 181; J. Stock, 157; D. Bowen, 162; D. Alber, 255; J. Krichbaum, 122; M. Foster, 170; T. Miller, 421; D. McGill, 163.

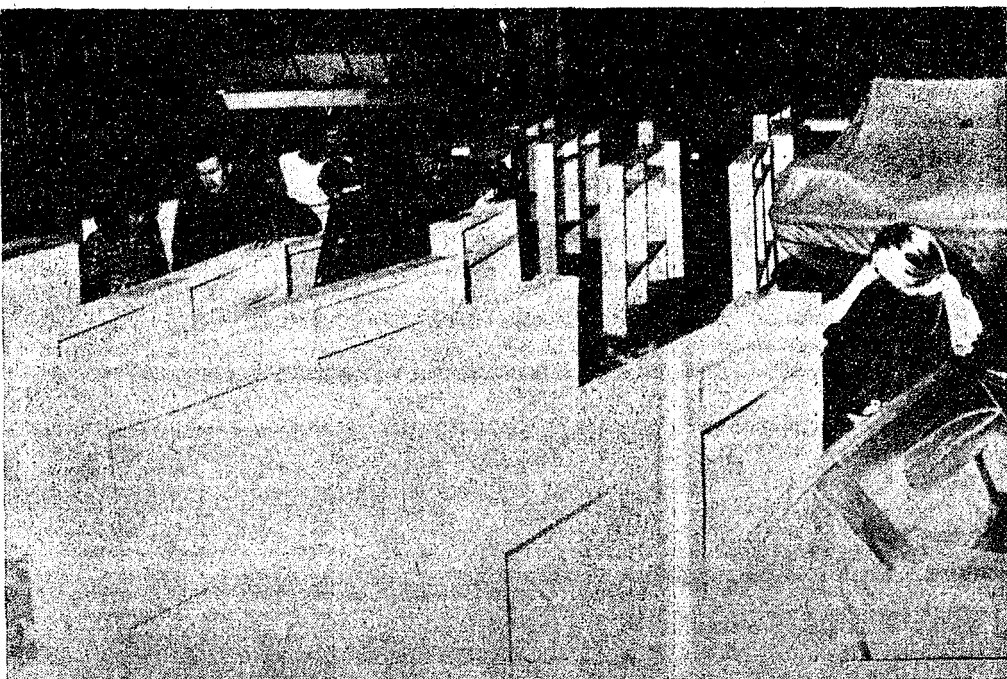
Games over 70: M. Umstead, 70; S. Wilson, 82, 73; J. Atkin- 80; D. Seyfried, 88, 87; D. Eissele, 97, 88; D. Waldyke, 95, 105; B. Freeman, 83, 104; C. Um- 85, 95; B. Ostrander, 103, 77; J. Stock, 74, 83; D. Bowen, 96; D. Alber, 133, 122; M. Fos- 70, 100; D. McGill, 75; 88.

CONSUMERS' CORNER

What should be known about department store credit cards? Just about six years ago, un- solicited credit cards were first mass distributed. Today, many people carry over ten credit cards. They are a convenience when you pay the statements in full when received. That way you avoid the service charges. Convenience turns into expense the moment service charges are added. "Revolving" or "Open End" de- partment store credit accounts are designed to let you purchase new products or services while paying only a part of the balance each month. This is an example of convenience turning into addition- al expenses. The service charge for the unpaid balance is 1 1/2 per- cent per month or 18 percent a year. This is the usual amount, however, many stores have even higher service charges.

More than one out of every four cars on the road has at least one seriously underinflated tire, according to a survey made for the National Bureau of Standards.

Washtenaw County Sheriff's de- puties report a door was forced to gain entry to the Paul Bunyan Restaurant at 5510 Jackson Rd., Scio township, over the weekend. Reportedly a cash drawer con- taining \$104 in cash was taken in the breaking and entering.



BOARD PAINTERS: Getting out to coat the boards for the hockey rink now going up at the Chelsea Community Fairgrounds were volunteers (left to right) Lola Worden, Tom Winans, Kathy Buck, Terry Finch, Tod Gardner, Dan Schaffer and Nancy Oswald, a special education teacher at the high school. The task is not yet complete. Some boards remain to be painted, and all must be installed around the 200 by 85 foot rink. Volunteers will be at it again this week-end.



GETTING IT TOGETHER are workers Matt Hanked (left) and Phil Boham, part of a large contingent of volunteers participating in the second week-end of hockey rink construction. The volunteers finished assembling the sections, most are painted, and provided that the grading of the rink is done, the sections will actually be installed at the rink site this Saturday.

Ford Drag Club Plans First Winter Rally for Sunday

Palmer, Ford Drag Club made plans for the first winter road rally at their monthly meeting last Wednesday, Nov. 10.

The rally will be held Sunday, Nov. 21, and will begin at 1 p.m. in the Stop & Shop parking lot. Participants will drive an approximately 100-mile course. Proceeds will be used for the Drag Club's Christmas party.

Smith gave members books on Andy Granatelli, and members drew names for prizes from STP. Don Bollinger, Bob Wallen and Harold Allen were winners.

FRUITY MONEY?

Land could once be bought in Bermuda for a sack of fruit. A sea captain paid 100 oranges, 100 lemons and 100 potatoes in 1634 for a piece of land now valued at over \$100,000.

Registrations Accepted For Hockey Association

Open registration for the Chelsea District Hockey Association will continue for the next week or so, Owen Loasby announced Monday.

Boys may register with Mrs. Larry Oswald, treasurer of the ODHA in room 204 of Chelsea High school, or with Owen Loasby at Gateway Sports Centre.

To register, boys between 8 and 18 must be accompanied by a parent or guardian, and must have their birth certificate or a copy in hand. The \$15 registration fee must be paid at the time of registration.

Cards Delayed

Delivery of the Christmas cards sold by the Chelsea High school junior class will be delayed one week, sponsor Ken Larson said Wednesday.

Due to the death of the greeting card company's founder, all orders shipped from the factory will be delayed by approximately one week.

Larson said that he hoped the class would be able to complete delivery during the week following Thanksgiving.

Area 4-H Project Champs Win Trip To National Show

Three Chelsea area 4-H'ers were among approximately 35 state project champs this year, winning trips to the National 4-H Congress to be held in Chicago, Nov. 28, through Dec. 2.

Jean Feldkamp, daughter of Mr. and Mrs. Glen Feldkamp, 9980 Chelsea-Manchester Rd., Manchester, bread project champ; Bonnie Powers, daughter of Mr. and Mrs. Charles Powers, 12930 Soic Church Rd., home design project champ; and Valerie Vogel, daughter of Mr. and Mrs. L. D. Vogel, 11437 Pleasant Lake Rd., Manchester, consumer education project champ, were selected after rigorous screening on the county, district and state level.

Competitors for the championships fill out forms and are interviewed by 4-H personnel on each level of the competition before final selections are made. The awards are based on leadership, community service, and "the overall look" of the 4-H'er as well as on project accomplishments.

Motor Vehicle Highway Funds Distributed

Third quarter Motor Vehicle Highway Fund collections are being distributed to Michigan counties, cities and villages, the State Highway Commission reports.

State Highway Director Henrik E. Stafseth said net receipts of the Highway Fund during July, August and September of 1971 amounted to \$81,461,406, an increase of \$3,695,257 or 4.8 percent compared to the same period during 1970.

Washtenaw county's share this quarter was \$550,269 compared with \$517,767 during 1970. Chelsea received \$10,371 com-

pared with \$9,497 in 1970, while Dexter received \$5,241. Last year Dexter received \$5,162 during the comparable quarter.

Manchester's share is \$5,809 this year, an increase of \$674 over last year. Milan received \$12,628 compared with \$10,775 during 1970. Saline received \$11,327 for the quarter compared with \$6,886 last year.

Ann Arbor received the largest allotment in the county—\$207,479 compared with last year's share of \$203,884.

Jackson county received \$474,225 this year. Last year it received \$450,660 for the comparable quarter.

All state gasoline and diesel fuel taxes and license plate fees go to the Motor Vehicle Highway Fund.

After deduction of collection costs and the State Waterways Commission's share, the money is distributed with 46 percent to the Department of State Highways, 34 percent to the state's 83 counties, and 20 percent to the 529 incorporated cities and villages.

Under this formula, the Highway Department will receive \$37,472,264 as its share of the third quarter collections. Counties will receive \$27,696,878 and the cities and villages will receive \$16,292,281.

Band Members Now Delivering Fruit Cakes

Chelsea High school band members are now delivering the orders from their fruit cake sale.

Mrs. Robert Daniels, co-chairman of the sale, reminds customers that only one order was taken for both Thanksgiving and Christmas this year.

Students will make sure that all orders are delivered by Thanksgiving, Mrs. Daniels said.

The fruit cake and candy sale is the largest money-making project undertaken by the Band Boosters, and proceeds are used to buy uniforms and provide band scholarships.

Pleads Guilty to Driving Charge

Chelsea police arrested Thomas J. Burnette, 40, 11400 Leeke Rd. Grass Lake, for driving under the influence of liquor Monday, Nov. 15 at 9:10 p.m.

Burnette was observed by Patrolman L. F. Schneider driving in an erratic manner in the downtown area of Chelsea. Burnette was arrested near the intersection of Dewey and Howard Sts.

Burnette pled guilty to the charge in 14th District court Tuesday, Nov. 16, and will be sentenced Dec. 20.

Subscribe today to The Standard!

6th ANNIVERSARY 60 VALUES FROM Magnavox

CELEBRATING LEADERSHIP IN ELECTRONICS SINCE 1911

This is your year to go to pieces. With stereo components by Magnavox.

If you want great sounds but you prefer the flexibility of a component system to a console, Magnavox has the answer. Select from a truly complete array of components that produce the same great sound you get from world-famous Magnavox Consoles. Choose from low-cost units or sophisticated high-performance combinations. Buy a basic Astro-Sonic stereo component system now, and add some exciting options later if you wish. An Astro-

Sonic system has a heart of solid-state units superbly engineered and crafted to give you concert hall realism and tonal quality that would impress an impresario.

Example: All Astro-Sonic custom stereo systems are equipped with features for the audiophile. Such as diamond stylus, two-speed changer, solid-state AM/FM stereo radio, no-drift FM/AFC, illuminated slide rule dial and flywheel tuning plus complete audio controls. We also offer full-sound air-suspension speaker systems, tape play and record jacks and a dust cover.

This year, when you think about stereo components, think about Magnavox! They've been making great sounds for over 60 years.

Model 9298, high-performance Astro-Sonic stereo high-fidelity radio-phonograph. Tuner/amp with 100 watts IHF music power, deluxe Micromatic changer with Cue Control and Stylus Pressure Adjustment, Air Suspension

Speaker System with two 10" high-compliance speakers and two 1000 Hz horns, push-button controls. Tuned RF stage on AM and FM.

Model 9290, Stereo high-fidelity, 20 watts EIA tuner/amp, automatic Mark I changer, Air-Suspension System with two high-compliance 6" speakers and two 3 1/2" speakers.

Magnavox—leadership and excellence in electronics since 1911.

the magnificent
Magnavox
TV, stereo consoles and components,
radios and tape recorders.



And now, the accessories.

- A. Model 8875, reel-to-reel stereo tape recorder—\$119.95.
- B. Model 8871, stereo cassette recorder/player—\$119.95.
- C. Model 886, 3-track cartridge player—\$69.95.
- D. Model 9176, stereo headphone set—\$19.95.

DECORATE YOUR BATHROOM FOR THE HOLIDAYS

IMPORTED
**PORCELAIN
ACCESSORIES**

Pink or Gold

3 pc. set \$5.50

Regularly \$7.00

GIFT IDEAS GALORE
Lay-Away Now for Christmas

HILLTOP BATH SHOP

1414 SOUTH MAIN, CHELSEA

HILLTOP, INC.

PHONE 475-2949

HEYDLAUFF'S

112 N. Main St., Chelsea

Phone 475-1221